

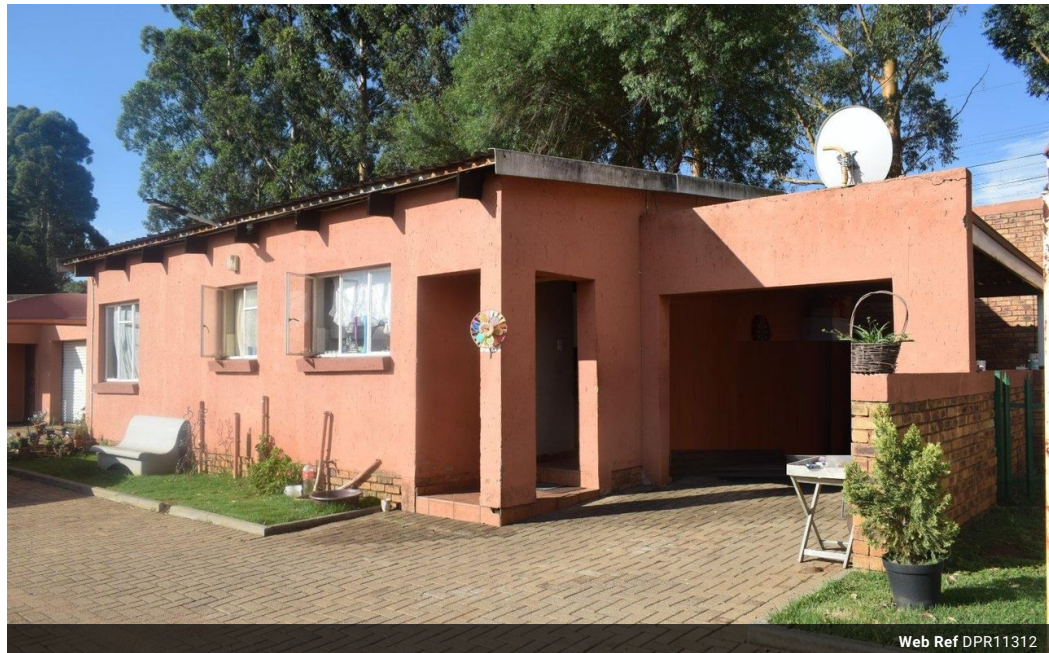


Adelaide Ngwenya
0682207670
adelaidengwenya@dpg.co.za

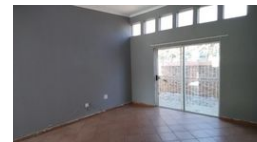
Contact Heidelberg

016 4232876

Vision 21 Industrial Park
Shop 26
Steel Road
Duncanville
Vereeniging



Web Ref DPR11312



R590,000

🛏 3 🚿 2 🏠 1

Monthly Bond Repayment R5,989.85

Calculated over 20 years at 10.75% with no deposit.

Transfer Costs R21,217.00 **Bond Costs** R15,795.00

These calculations are only a guide. Please ask your conveyancer for exact calculations.

Monthly Levy R1,200 **Monthly Rates** R450

Spacious Townhouse in Secure Complex

This charming three-bedroom home offers an array of desirable features, providing comfort and convenience for a modern lifestyle. Nestled within a secure and fenced compound, this property ensures both safety and tranquility for its residents. Upon entering, you're welcomed by the elegance of tiled floors that extend throughout the house, enhancing both aesthetics and ease of maintenance. The living spaces boast curtain rails, allowing for personalized décor choices and privacy. Each bedroom comes equipped with built-in cupboards, optimizing storage and organization. The accommodation includes two tiled bathrooms, with one designed as an en-suite for added privacy and convenience. The bathrooms reflects a contemporary style.

For parking, the property offers a single garage, supplemented by a convenient carport and secure...

Features

Interior		Exterior		Sizes	
Bedrooms	3	Garages	1	Floor Size	78m²
Bathrooms	2	Security	No		
Kitchens	1	Pool	No		
Furnished	No	Views	False		

