



Vuyo Maphanga
0790984700
vuyomaphanga@dpg.co.za

Contact Heidelberg

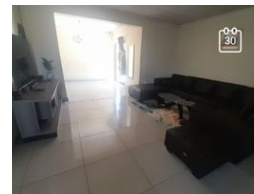
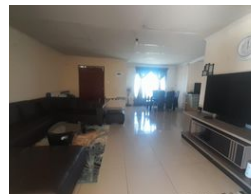
016 4232876

Vision 21 Industrial Park
Shop 26
Steel Road
Duncanville
Vereeniging

3 Bedroom House For Sale in Shalimar Ridge



Web Ref DPR19890



R900,000

3 1 4

Monthly Bond Repayment R8,985.42

Calculated over 20 years at 10.5% with no deposit.

Transfer Costs R28,334.00 **Bond Costs** R21,450.00

These calculations are only a guide. Please ask your conveyancer for exact calculations.

Monthly Rates R1,600

Tuscan Style Home with Flatlet!

This lovely home is located in a peaceful suburb of Shalimar Ridge. It offers plenty of space, a modern feel, and a separate flatlet—perfect for extended family. The kitchen is modern and well-designed, with built-in cupboards, marble countertops, and an electric stove on a peninsula with an under-counter oven. Extra storage space is available just off the kitchen, overlooking the entrance hall. The open-plan lounge and dining area makes family time and entertaining easy, and there's a small study nook that can be used as a workspace or reading area. A separate laundry room with built-in cupboards adds to the convenience and could be converted into a small bedroom if needed.

There are three tiled bedrooms, all with built-in cupboards. The main bedroom has extra cupboard space with separate his and hers built in cupboards. The...

Features

Pets Allowed	Yes		
Interior		Exterior	
Bedrooms	3	Garages	4
Bathrooms	1	Carports / Parkings	2
Kitchens	1	Security	Yes
Recep. Rooms	2	Pool	No
Furnished	No	Views	False
		Sizes	
		Land Size	435m ²

