



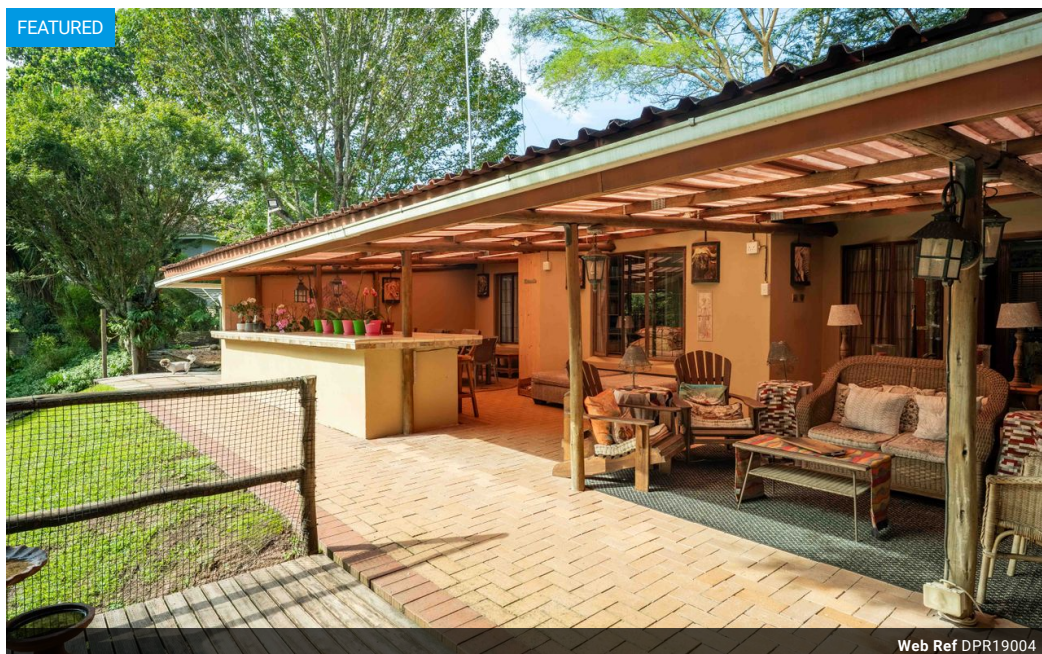
Jean Liversedge
082 726 1956
jeanliversedge@dpg.co.za

Contact Upper Highway Gillitts

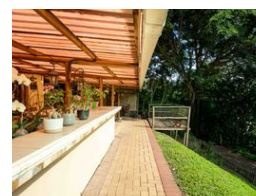
031 7646262

8 Old Main Road
Gillitts

FEATURED



Web Ref DPR19004



R1,650,000

3 2

Monthly Bond Repayment R16,751.28

Calculated over 20 years at 10.75% with no deposit.

Transfer Costs R52,453.00 **Bond Costs** R30,875.00

These calculations are only a guide. Please ask your conveyancer for exact calculations.

Monthly Rates R1,277.8

Tranquility at it's Best!

A home for all seasons!

Beautiful treed garden for the children at play.

The perfect starter home for a young family.

The large open plan living area with built in bar is the ideal spot to sit with a sundowner overlooking the private garden.

The spacious exterior store room with pantry cupboards has it own entrance and would make a perfect work form home office.

Ample parking with the open carports.

Some of the extra features include: Fibre already in place. JoJo tank for the garden irrigation.

Come and see for yourself - this is the opportunity to put your foot in to the property portfolio.

Features

Pets Allowed Yes

Interior

Bedrooms	3
Bathrooms	2
Kitchens	1
Recep. Rooms	2
Furnished	No

Exterior

Carports / Parkings	3
Security	Yes
Pool	No
Views	False

Sizes

Floor Size	246m ²
Land Size	2,040m ²

