

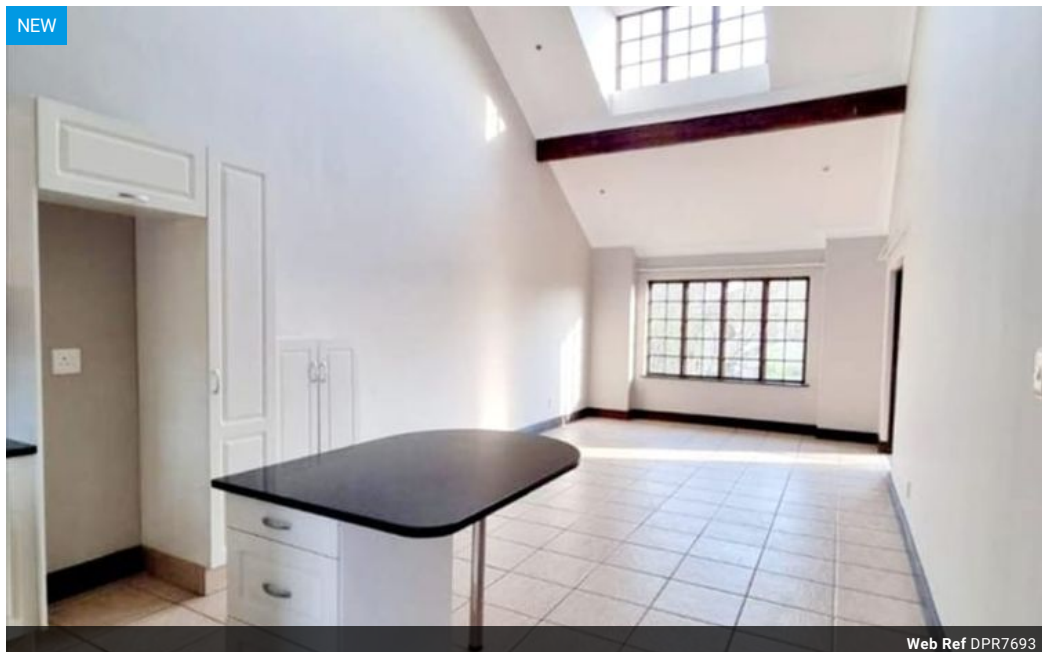


**Maxine Strydom**  
083 290 6695  
maxinestrydom@dpg.co.za

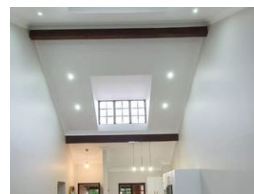
Contact Upper Highway Gillitts

031 7646262

8 Old Main Road  
Gillitts



Web Ref DPR7693



**R1,100,000**

🛏 1 🚿 1 🏠 1

**Monthly Bond Repayment** R10,982.18

Calculated over 20 years at 10.5% with no deposit.

**Transfer Costs** R32,851.00 **Bond Costs** R25,220.00

These calculations are only a guide. Please ask your conveyancer for exact calculations.

## Stunning 1 Bedroom Double Volume Apartment in Clifton Hill Estate

Now is the perfect time to invest in this incredible opportunity within the sought after Clifton Hill Estate.

This stunning double volume apartment offers a bright and spacious layout, with high ceilings and modern finishes throughout. The open plan design creates a seamless flow from the stylish white kitchen into the large lounge and dining area, making it ideal for both everyday living and entertaining.

The bedroom opens onto a private patio, while the full bathroom features both a bath and shower. A lovely ceiling window floods the home with natural light, and air-conditioning adds extra comfort.

The property includes a dedicated parking bay as well as an automated garage, providing convenience and security.

Clifton Hill Estate offers a secure and luxurious lifestyle with 24-hour manned security, biometric access, and...

## Features

### Interior

Bedrooms	1
Bathrooms	1
Kitchens	1
Recep. Rooms	2
Furnished	No

### Exterior

Garages	1
Carports / Parkings	1
Security	Yes
Pool	Yes
Views	True

### Sizes

Floor Size	70m²
------------	------