



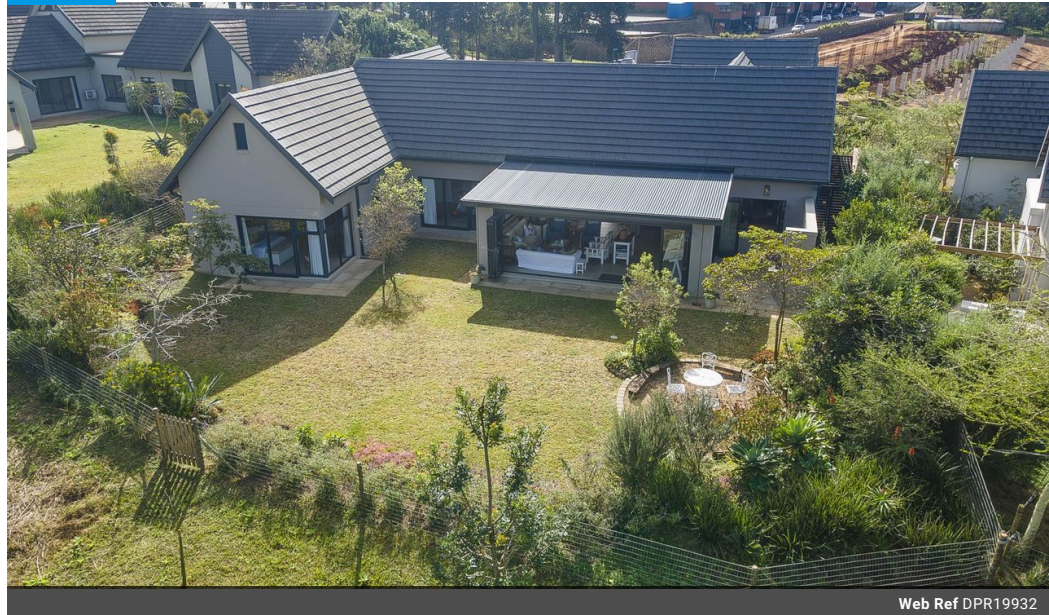
Jason Howes
084 400 9526
jasonhowes@dpg.co.za

Contact Upper Highway Gillitts

031 7646262

8 Old Main Road
Gillitts

FEATURED



Web Ref DPR19932



R5,395,000

🛏 4 🚿 3 🚗 2

Monthly Bond Repayment R53,862.59

Calculated over 20 years at 10.5% with no deposit.

Transfer Costs R451,428.00 **Bond Costs** R65,785.00

These calculations are only a guide. Please ask your conveyancer for exact calculations.

Monthly Levy R5,210 **Monthly Rates** R4,602

Exquisite Family Home with Golf Course Views!

By Appointment Only

Nestled on the 13th fairway of the prestigious Cotswold Downs Golf Estate, this beautifully designed single-story home offers the perfect balance of luxury, comfort, and natural beauty.

Step into spacious open-plan living areas filled with natural light, seamlessly flowing from the elegant formal lounge with sweeping views to a cozy TV lounge—perfect for relaxed family living. The modern kitchen is ideal for entertaining, complemented by generous indoor and outdoor spaces designed for effortless flow.

Featuring 3 large bedrooms, 3 stylish bathrooms, and a private home office, this home caters to both family life and the work-from-home lifestyle. The master suite offers privacy and garden views, enhancing the home's serene atmosphere - Plus the added bonus of an unfinished loft space, ready to be...

Features

Pets Allowed Yes

Interior

Bedrooms	4
Bathrooms	3
Kitchens	1
Recep. Rooms	3
Studies	1
Furnished	No

Exterior

Garages	2
Carports / Parkings	3
Security	Yes
Dom. Accom.	0.5
Pool	No
Views	True

Sizes

Floor Size	315m ²
Land Size	811m ²

Extras

Gated Community Security Estate Golf Estate Open Plan gallery Window Gallery Windows Easy Gate Access Leisure Centre Cotties Pool and Pavilion MTB and Running Track Dog Park BMX Track Ceiling Fans

