



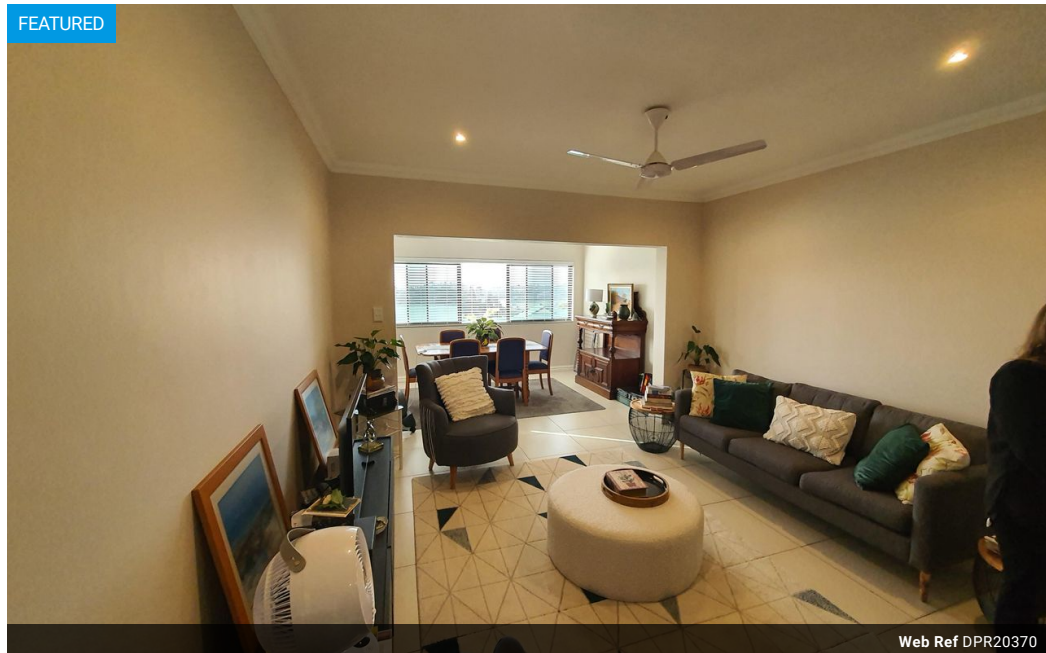
Jan Eaglestone
078 485 2503
janeaglestone@dpg.co.za

Contact Upper Highway Gillitts

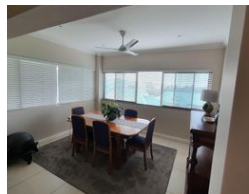
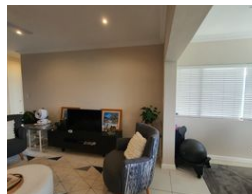
031 7646262

8 Old Main Road
Gillitts

FEATURED



Web Ref DPR20370



R1,450,000

🛏 1 🚿 1

Monthly Bond Repayment R14,720.82

Calculated over 20 years at 10.75% with no deposit.

Transfer Costs R44,285.00 **Bond Costs** R28,990.00

These calculations are only a guide. Please ask your conveyancer for exact calculations.

Monthly Levy R1,439 **Monthly Rates** R1,390

Popular Green Meadow Country Estate – Secure & Serene Retirement Living

Welcome to this spacious and beautifully maintained apartment in the highly sought-after Green Meadow Country Estate – designed for relaxed, secure retirement living. Enjoy the peace of mind and vibrant lifestyle that comes with being part of a well-established, over-50s community.

The large, open-plan living and dining area flows into a bright sun lounge with fitted blinds and stunning views over the exclusive Cotswold Golf Estate. Fibre and DSTV connectivity are available—simply bring your own service provider.

The modern granite kitchen is both practical and stylish, featuring an under-counter oven and hob, breakfast bar, corner pantry, and the added bonus of a dishwasher included in the sale.

The comfortable bedroom includes built-in cupboards, a ceiling fan, and a TV bracket, while the spacious bathroom offers a bath,...

Features

Interior

| | |
|--------------|----|
| Bedrooms | 1 |
| Bathrooms | 1 |
| Kitchens | 1 |
| Recep. Rooms | 2 |
| Furnished | No |

Exterior

| | |
|---------------------|-------|
| Carports / Parkings | 1 |
| Security | Yes |
| Pool | Yes |
| Views | False |

Sizes

| | |
|------------|------|
| Floor Size | 72m² |
|------------|------|

