



Sheena Stidworthy
082 324 7941
sheenastidworthy@dpg.co.za

Contact Upper Highway Gillitts

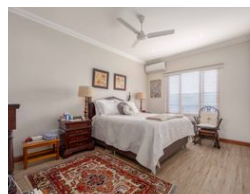
031 7646262

8 Old Main Road
Gillitts

FEATURED



Web Ref DPR20882



R1,950,000

🛏 2 🚿 1

Monthly Bond Repayment R19,468.41

Calculated over 20 years at 10.5% with no deposit.

Transfer Costs R72,308.00 **Bond Costs** R32,760.00

These calculations are only a guide. Please ask your conveyancer for exact calculations.

Monthly Levy R2,207 **Monthly Rates** R1,375

Green meadow country estate - Calling all over 50s

Come and view this spacious 105sqm 2bed unit in this well established gated complex.

Unit Features.

This lovely bright unit has open plan lounge, dining room with granite topped kitchen and ample cupboards

The spacious main bedroom has air conditioning and ample cupboard space and is sunny and bright. The 2nd bedroom is a good size with built in cupboards and would make a lovely study

A full bathroom has extractor fan over the shower

There is a storeroom for additional storage space

Complex Amenities

Clubhouse, library and laundry in the complex making this a must see estate if you are over 50 years

Features

Pets Allowed Yes

Interior

Bedrooms	2
Bathrooms	1
Kitchens	1
Recep. Rooms	2
Furnished	No

Exterior

Carports / Parkings	2
Security	Yes
Pool	Yes
Views	False

Sizes

Floor Size	105m²
------------	-------

