



**Debbie Lundin**  
083 262 6103  
debbielundin@dpg.co.za



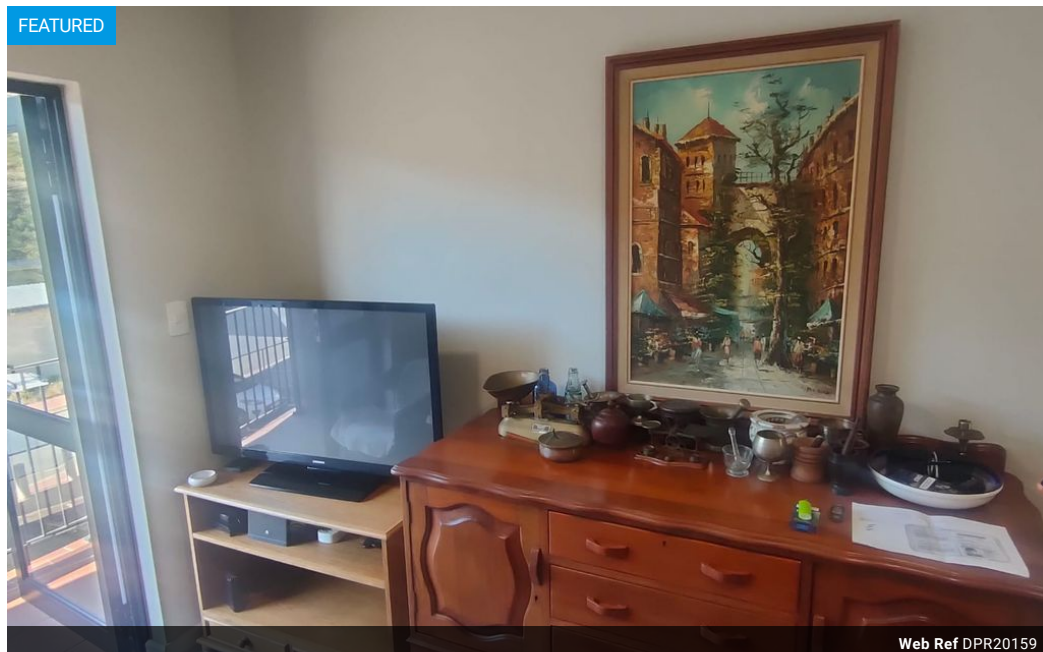
**Bruce Wright**  
083 264 6764  
brucewright@dpg.co.za

Contact Upper Highway Gillitts

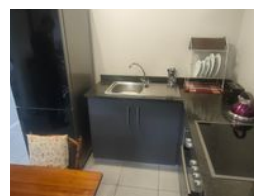
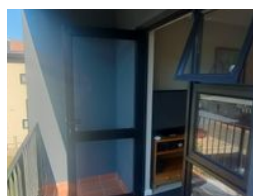
031 7646262

8 Old Main Road  
Gillitts

## FEATURED



Web Ref DPR20159



## R975,000

2 1

**Monthly Bond Repayment** R9,734.20

Calculated over 20 years at 10.5% with no deposit.

**Transfer Costs** R30,502.00 **Bond Costs** R23,335.00

These calculations are only a guide. Please ask your conveyancer for exact calculations.

**Monthly Levy** R1,104.0

**Monthly Rates** R729.4

**Special Levy** R165.6

## Calling All Investors and First-Time Homeowners

A lovely gem is waiting for you—perfectly designed for comfortable living.

2 Spacious Bedrooms with built-in cupboards

1 Modern Bathroom Open-Plan Kitchen flowing into a sunny lounge

The lounge opens to a covered balcony—ideal for morning coffee or lazy afternoons

Tiled floors throughout with sleek aluminium windows

Laundry-ready: plumbed for a washing machine under the linen cupboard

The secure complex features: A sparkling communal pool, Clubhouse for entertaining A fun play area for kids A scenic trail walk for nature lovers

Don't miss out on this lifestyle opportunity!

Call me for a viewing,

## Features

### Interior

Bedrooms	2
Bathrooms	1
Kitchens	1
Recep. Rooms	1
Furnished	No

### Exterior

Carports / Parkings	1
Security	No
Pool	Yes
Views	False

### Sizes

Floor Size	51m²
------------	------

### Extras

24 Hour Access Balcony Bath, Toilet and Basin Complex Open Plan Kitchen Oven & Hob  
Washing Machine Connection Aluminium Window

