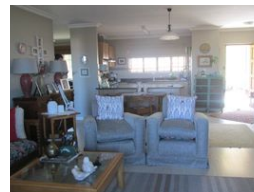




Jennifer Gordon
072 351 5363
jennifergordon@dpg.co.za

Contact Howick
033 3308066

122 Main Street,
Howick,
3290



R2,150,000

🛏 3 🚿 2 🏠 1

Monthly Bond Repayment R21,465.17

Calculated over 20 years at 10.5% with no deposit.

Transfer Costs R87,088.00 **Bond Costs** R34,625.00

These calculations are only a guide. Please ask your conveyancer for exact calculations.

Monthly Levy R2,638 **Monthly Rates** R1,183

SPACIOUS UPMARKET HOME IN EAGLE RIDGE FOR R 2 150 000

This immaculate and spacious home offers comfort, style, and breathtaking views – perfect for relaxed living in an upmarket setting.

The home features a glass-enclosed verandah with magnificent panoramic views, a generous lounge area, and open-plan living with luxury vinyl flooring throughout. The open-plan dining room leads into a wide entrance hall with a recess area that opens to a tiled external patio. The modern kitchen includes wrap-finished cupboards, granite countertops, a breakfast bar, gas hob, electric oven, blinds, and plumbing for a dishwasher.

The private main bedroom is large and includes a bay window with views, a walk-through dressing room, air conditioning, an overhead fan, and plush luxury carpeting. The full en-suite bathroom is modern and features both a shower and a bath. There is an additional spacious...

Features

| | | | | | |
|---------------------|-----|---------------------|------|--------------|-------|
| Pets Allowed | Yes | | | | |
| Interior | | Exterior | | Sizes | |
| Bedrooms | 3 | Garages | 1 | Floor Size | 162m² |
| Bathrooms | 2 | Carports / Parkings | 1 | | |
| Kitchens | 1 | Security | Yes | | |
| Recep. Rooms | 2 | Pool | No | | |
| Furnished | No | Views | True | | |

