

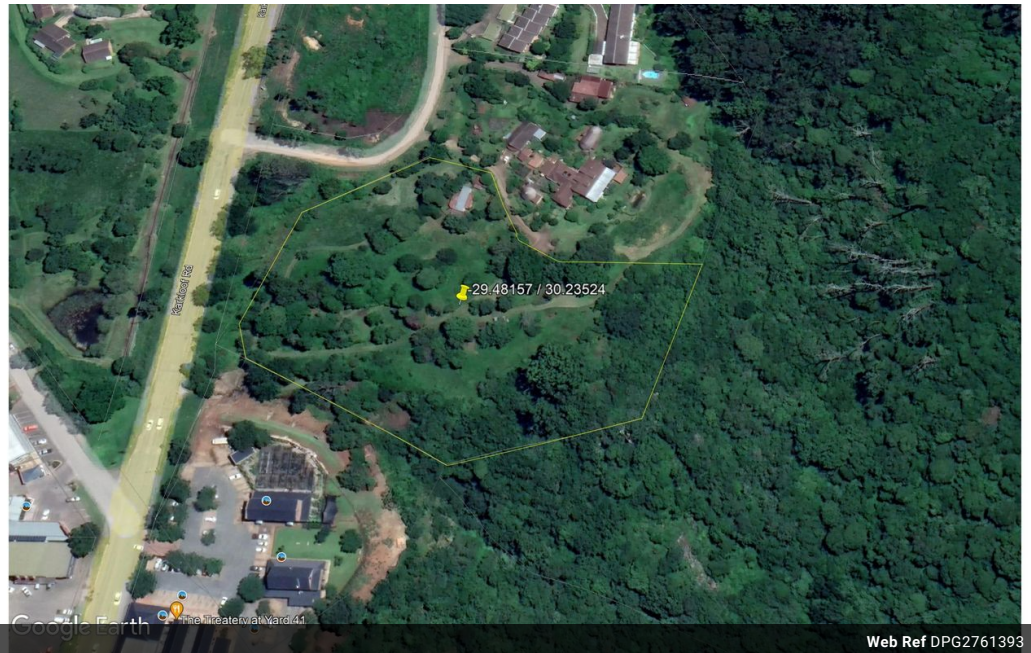


**Jennifer Gordon**  
072 351 5363  
jennifergordon@dpg.co.za

Contact Howick

033 3308066

122 Main Street,  
Howick,  
3290



Web Ref DPG2761393

## R4,250,000

**Monthly Bond Repayment** R43,147.23

Calculated over 20 years at 10.75% with no deposit.

**Transfer Costs** R313,341.00    **Bond Costs** R55,380.00

These calculations are only a guide. Please ask your conveyancer for exact calculations.

1.74 Hectare stand - municipal approval for medium density development - excellent location

Stunning development opportunity with awesome views-1.74 Hectare stand within easy walking distance to yard 41 and Howick centre. The site is mostly easy build flattish stands with moderate sloping gradients between areas.

Some mature vegetation, bird and wildlife add to the appealing atmosphere.

The owners have municipal approval for a medium density development. Therefore, depending on the placements of the units between 25-28 simplexes could be built with ease.

2 Small older buildings could be used for developers convenience.

## Features

