



Sindi Ngwane
Candidate Property Practitioner
Registered with PPRA
(FFC 119 466 4)
079 130 4436
sindyngwane@dpg.co.za

Contact Howick
033 3308066

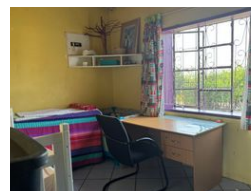
122 Main Street,
Howick,
3290

FEATURED



SOLE MANDATE

Web Ref DPR21306



R580,000

🛏 2 🚿 1

Monthly Bond Repayment R5,790.60

Calculated over 20 years at 10.5% with no deposit.

Transfer Costs R21,273.00 **Bond Costs** R15,795.00

These calculations are only a guide. Please ask your conveyancer for exact calculations.

Monthly Rates R450

Perfect Starter Home at Mpophomeni

Cozy and inviting 2-bedroom home perfect for small families, couples, or individuals. This charming property features:

- 2 spacious bedrooms with ample storage
- 1 modern bathroom
- Open-plan living area with kitchen
- Private garden or patio (if applicable)
- Secure parking and neighborhood
- Close proximity to schools, shops, and amenities

Ideal for those seeking a low-maintenance lifestyle or a starter home. Contact us for more information or to schedule a viewing!"

Features

Interior

Bedrooms	2
Bathrooms	1
Kitchens	1
Recep. Rooms	1
Furnished	No

Exterior

Carports / Parkings	1
Security	No
Pool	No
Views	False

Sizes

Land Size	325m²
-----------	-------