



Leigh Phillips
079 468 3425
leighp@dpg.co.za



Michela Phillips
010 025 0118

meyersdalaccounts@dpg.co.za

Contact Platinum Rentals

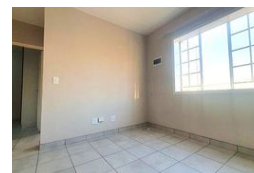
010 0250118

95 Victoria Street
Oakdene
Johannesburg South
2190



SOLE MANDATE

Web Ref DPR20953



R450,000

2 1

Monthly Bond Repayment R4,492.71

Calculated over 20 years at 10.5% with no deposit.

Transfer Costs R17,984.00 **Bond Costs** R12,935.00

These calculations are only a guide. Please ask your conveyancer for exact calculations.

Monthly Levy R1,200 **Monthly Rates** R289

A quaint home close to all amenities

This quaint ground floor unit offers 2 bedrooms, both with fitted cupboards and is serviced by 1 bathroom
An open plan living area with lounge and small kitchen.
24 hour security
Close to highways and byways

Features

Interior

Bedrooms	2
Bathrooms	1
Kitchens	1
Recep. Rooms	1
Furnished	No

Exterior

Carports / Parkings	1
Security	Yes
Pool	No
Views	False