



**Leigh Phillips**  
079 468 3425  
leighp@dpg.co.za

Contact Platinum Rentals

010 0250118

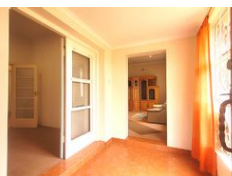
95 Victoria Street  
Oakdene  
Johannesburg South  
2190

NEW



SOLE MANDATE

Web Ref DPR20452



**R1,499,999**

3 2 3

**Monthly Bond Repayment** R15,228.42

Calculated over 20 years at 10.75% with no deposit.

**Transfer Costs** R45,784.97 **Bond Costs** R28,990.00

These calculations are only a guide. Please ask your conveyancer for exact calculations.

**Monthly Rates** R1,039.6

### Charming Family Home with Income Potential

This neat and inviting home welcomes you the moment you step through the front door into a spacious entrance hall. The large lounge and dining area offer plenty of room for family living and entertaining, while the kitchen—though older—remains highly functional and full of potential.

The home features three well-sized bedrooms, all with built-in cupboards, and two bathrooms to comfortably accommodate the whole family. A handy linen cupboard in the passage adds extra storage space.

Outside, an unfinished garden cottage presents a great opportunity—perfect for extended family or to generate rental income. The tandem garage provides ample parking, easily fitting up to three cars.

Whether you're looking for a cozy family home or an investment with potential, this property has a lot to offer.

### Features

#### Interior

Bedrooms	3
Bathrooms	2
Kitchens	1
Recep. Rooms	2
Studies	1
Furnished	No

#### Exterior

Garages	3
Carports / Parkings	2
Security	No
Pool	No
Views	False

#### Sizes

Floor Size	335m <sup>2</sup>
Land Size	756m <sup>2</sup>