

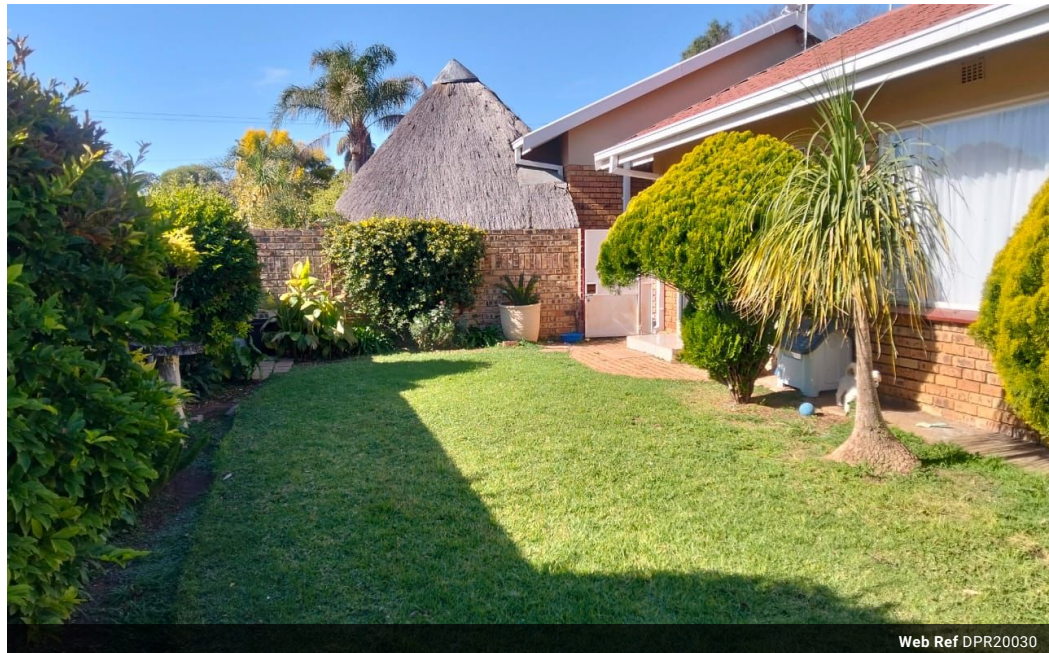


Julia Sefuthi
068 216 8782
julias@dpg.co.za

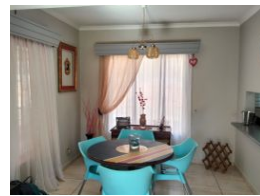
Contact Klerksdorp

083 2642457

8 De Wet Street
Stilfontein
2551



Web Ref DPR20030



R840,000

2 1.5 1

Monthly Bond Repayment R8,386.39

Calculated over 20 years at 10.5% with no deposit.

Transfer Costs R28,334.00 **Bond Costs** R21,450.00

These calculations are only a guide. Please ask your conveyancer for exact calculations.

Monthly Levy R2,300 **Monthly Rates** R1,500

Pack Your bags and Move In

This clean as a pin townhouse offers 2 bedrooms with BICs, open plan lounge, dining and a kitchen with scullery, storage or laundry, full bathroom with separate toilet for convenience. Outside is a single garage with extra parking, a beautiful garden. Call today and claim it yours.

Features

Pets Allowed Yes

Interior

Bedrooms	2
Bathrooms	1.5
Kitchens	1.5
Recep. Rooms	2
Furnished	No

Exterior

Garages	1
Carports / Parkings	1
Security	No
Pool	No
Views	False

