



Carol Higgs
083 785 4078
carolhiggs@dpg.co.za

Contact Upper Highway Gillitts

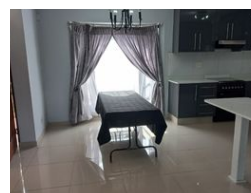
031 7646262

8 Old Main Road
Gillitts

FEATURED



Web Ref DPR19575



R1,650,000

🛏 3 🚿 2 🏠 2

Monthly Bond Repayment R17,031.11

Calculated over 20 years at 11% with no deposit.

Transfer Costs R52,453.00 **Bond Costs** R30,875.00

These calculations are only a guide. Please ask your conveyancer for exact calculations.

Monthly Levy R3,377 **Monthly Rates** R1,453

Lock Up & Go Lifestyle Simplex!

Tucked away at the end of a quiet row of just three units within a well-managed complex, this lovely modern facebrick simplex offers secure, stepless living in the heart of Gillitts. Perfectly positioned with easy access to both the M13 and N3 freeways, convenience meets comfort in this low-maintenance lock-up-and-go home.

Boasting 3 spacious bedrooms, 2 pristine bathrooms, and a double automated garage, this home features porcelain tiles throughout, enhancing its sleek, modern appeal while ensuring effortless upkeep.

The open-plan kitchen, dining, and lounge areas flow seamlessly, creating an inviting space for entertaining or family living. The main lounge leads to a versatile second living area—ideal as a study, sunroom, or relaxation space—which in turn opens onto an undercover patio and beautifully landscaped garden,...

Features

Pets Allowed		Yes			
Interior				Exterior	
Bedrooms	3			Garages	2
Bathrooms	2			Carports / Parkings	4
Kitchens	1			Security	No
Recep. Rooms	3			Pool	No
Studies	1			Views	False
Furnished	No				
				Sizes	
				Floor Size	131m²

Extras

24 Hour Access Air Conditioner Burglar Bars Built in Wardrobes Covered Patio Curtain Rails
Electric Garage Electric Gate Entrance Hall Extractor Fan Landscaped Laundry Open Plan
Kitchen Open Plan Room Oven & Hob Visitors Parking Washing Machine Connection

