



Lindelani Msomi
Candidate Property Practitioner
Registered with PPRA
(FFC 114 194 6)
082 687 2035
lindelanimsomi@dpg.co.za

Contact Pinetown

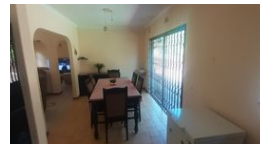
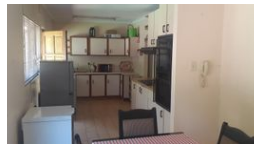
031 8229071

39 Glenugie Road
Pinetown



SOLE MANDATE

Web Ref DPR2846



R1,075,000

3 2 1

Monthly Bond Repayment R10,913.71

Calculated over 20 years at 10.75% with no deposit.

Transfer Costs R32,749.00 **Bond Costs** R25,220.00

These calculations are only a guide. Please ask your conveyancer for exact calculations.

Monthly Rates R730

A MUST VIEW PROPERTY

Come and view this well spotted family home at a very reasonable price. 3 Beds, 2 baths, 2 lounges, dining room, study, lock up garage, 2 undercover parkings and pool. Fully fenced and gated and alarmed. Hurry up to avoid disappointment.

Features

Pets Allowed Yes

Interior

Bedrooms	3
Bathrooms	2
Kitchens	1
Recep. Rooms	3
Studies	1
Furnished	No

Exterior

Garages	1
Carports / Parkings	2
Security	Yes
Pool	Yes
Views	False

Sizes

Land Size	886m²
-----------	-------