

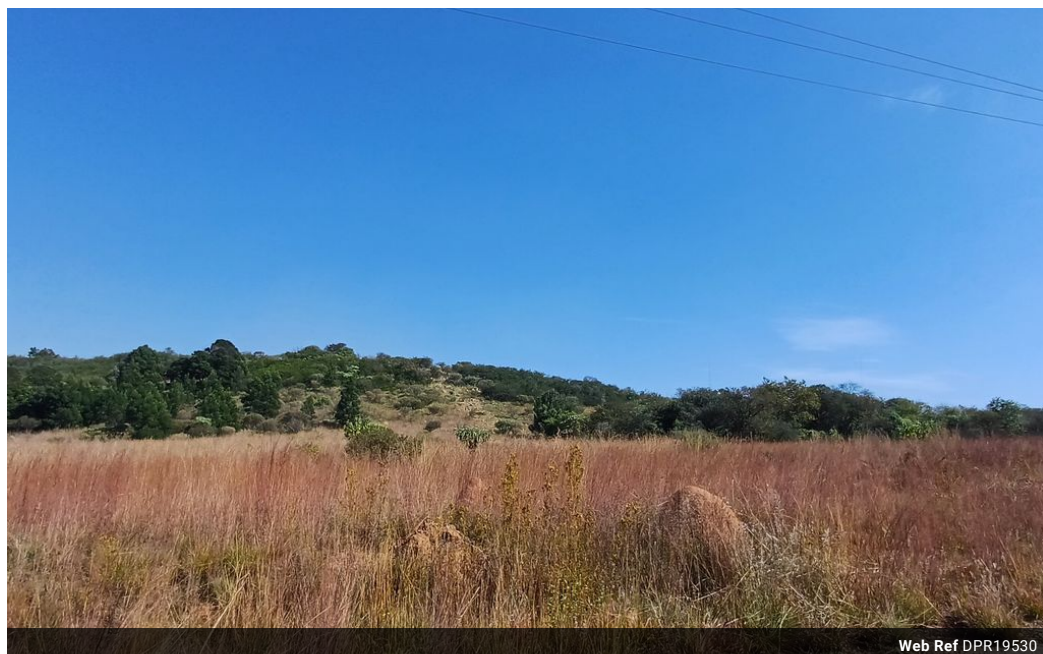


Isabel Lombard
0848304864
isabellombard@dpg.co.za

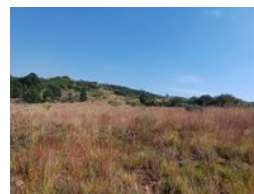
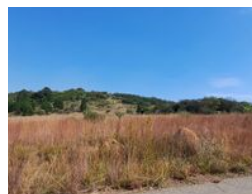
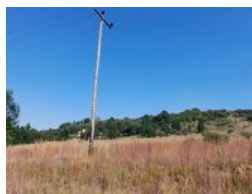
Contact **Meyerton**

016 0042352

24 Glynn Street
Rothdene,
Meyerton,
1961



Web Ref DPR19530



R1,720,000

Monthly Bond Repayment R17,461.94

Calculated over 20 years at 10.75% with no deposit.

Transfer Costs R56,239.00 **Bond Costs** R30,875.00

These calculations are only a guide. Please ask your conveyancer for exact calculations.

Monthly Levy R2,027 **Monthly Rates** R2,496

Prestigious Blue Saddle Ranches Equestrian Stand

Welcome to your new sanctuary within the prestigious Blue Saddle Ranches Equestrian and Security Estate, where nature, security, and equestrian elegance come together in perfect harmony. This exceptional property offers a sprawling 19,758 m² of pristine, untouched land—an extraordinary opportunity to craft your dream home in the heart of Midvaal, just south of Johannesburg. From the moment you arrive, you'll be captivated by the beauty of the natural surroundings and the enchanting landscape that invites a tranquil, luxurious lifestyle.

Living here means embracing a community of like-minded individuals who share your passion for equine pursuits and outdoor living. The estate provides access to top-tier horse facilities, offering endless opportunities for riding, competing, or turning your passion into a thriving venture....

Features