



Hasiena Hassen
0846178688
hasienahassen@dpg.co.za

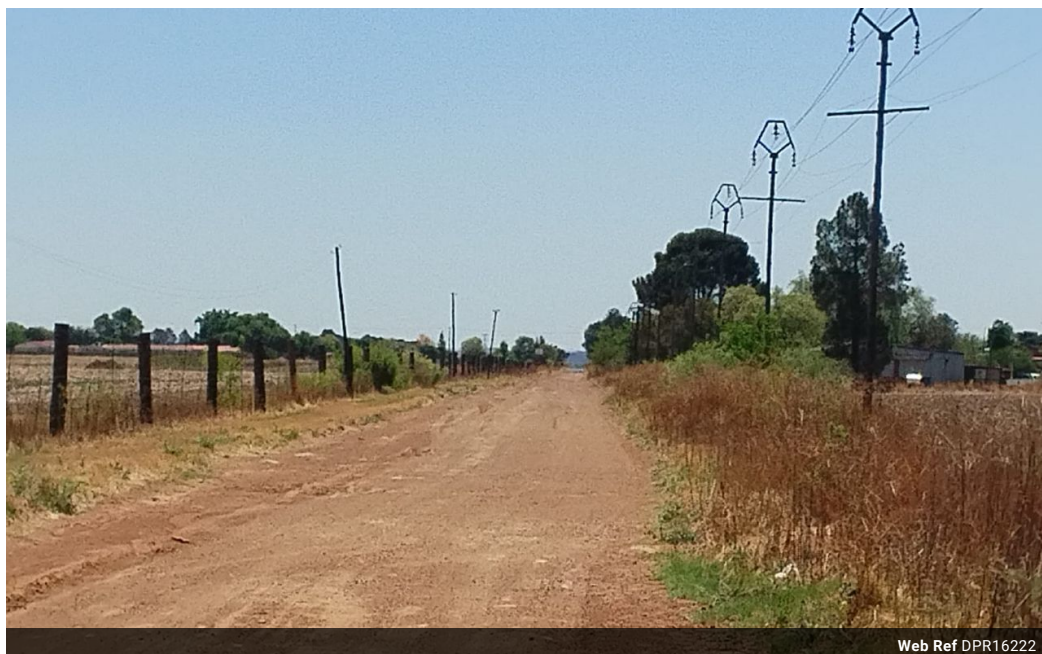


Cobus Thomas
0840960643
cobust@dpg.co.za

Contact Meyerton

016 0042352

24 Glynn Street
Rothdene,
Meyerton,
1961



Web Ref DPR16222



R2,600,000

Monthly Bond Repayment R26,395.95

Calculated over 20 years at 10.75% with no deposit.

Transfer Costs R123,720.00 **Bond Costs** R38,415.00

These calculations are only a guide. Please ask your conveyancer for exact calculations.

Monthly Rates R800

EXPANSIVE VACANT LAND IN CHRISSIEFONTEIN

Located in the sought-after area of Chrissiefontein, Meyerton, this charming 20-hectare smallholding offers the perfect blend of convenience and rural tranquility. Positioned just 10 kilometers from Meyerton, the property provides quick and easy access to main roads, making daily travel seamless while maintaining a sense of seclusion. Nearby schools and shopping centers enhance the appeal, offering essential services without compromising the peaceful farm lifestyle. The smallholding is well-suited for those looking to cultivate crops or establish a working farm on the area's fertile land, renowned for its productivity and quality.

The property is ideal for those dreaming of a balanced life between modern conveniences and country living. The open, expansive land offers endless possibilities for agriculture, livestock, or simply...

Features