

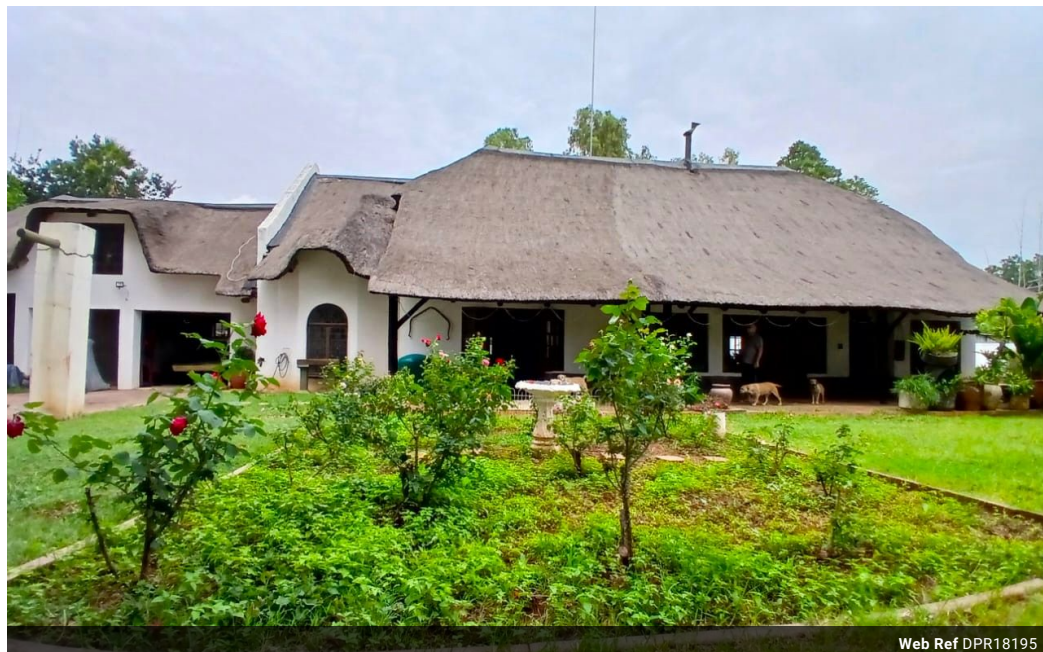


Isabel Lombard
0848304864
isabellombard@dpg.co.za

Contact Meyerton

016 0042352

24 Glynn Street
Rothdene,
Meyerton,
1961



Web Ref DPR18195



R3,100,000

🛏 4 🚿 2 🚗 3

Monthly Bond Repayment R31,472.10

Calculated over 20 years at 10.75% with no deposit.

Transfer Costs R173,379.00 **Bond Costs** R44,070.00

These calculations are only a guide. Please ask your conveyancer for exact calculations.

Monthly Rates R3,000

Massive family home in Henley on Klip

Located in the desirable neighbourhood of Henley on Klip, this expansive thatch home presents a unique blend of charm and functionality, making it an ideal residence for larger families. Boasting four well-appointed bedrooms, each equipped with a ceiling fan, the property includes two modern bathrooms, one of which is en-suite. The inviting open-plan design integrates the kitchen, lounge, and dining area, highlighted by exquisite teak flooring, wooden French doors, and stained glass windows that add a touch of elegance. The kitchen features ample cabinetry, a breakfast nook, and a butcher's block, while the cozy fireplace in the lounge provides warmth during cold winters. Additional amenities include three garages with motorized doors—one featuring a drive-through capability—equipped with a car hoist and a 300-liter compressor...

Features

Pets Allowed		Yes			
Interior				Exterior	
Bedrooms	4			Garages	3
Bathrooms	2			Carports / Parkings	10
Kitchens	1			Security	Yes
Recep. Rooms	2			Dom. Accom.	1
Studies	1			Pool	Yes
Furnished	No			Views	False
				Sizes	
				Land Size	3,966m ²