

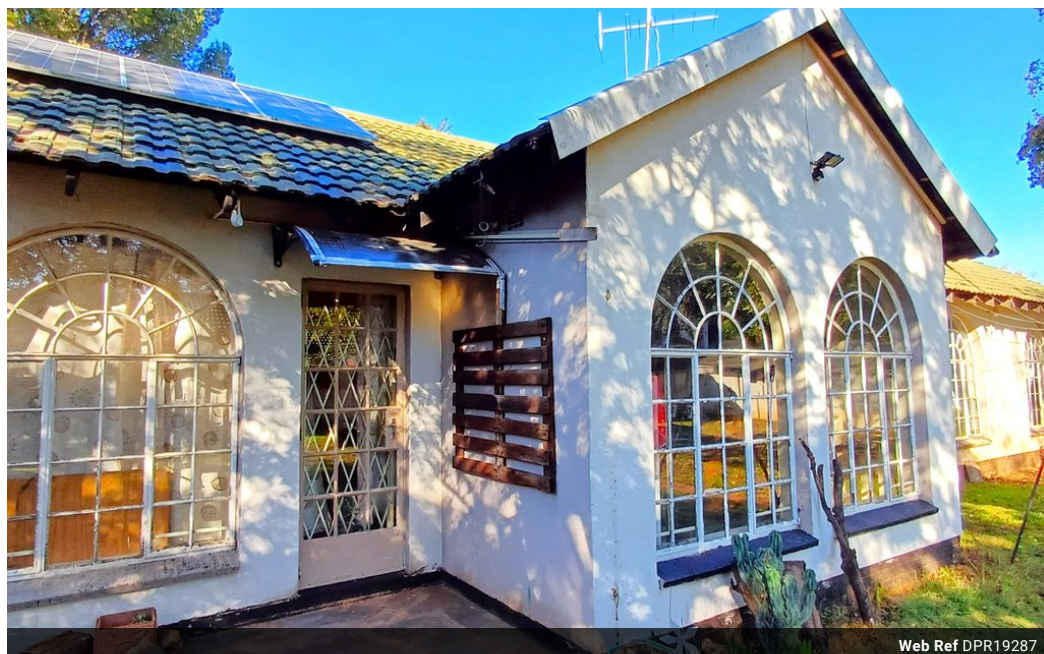


Isabel Lombard
0848304864
isabellombard@dpg.co.za

Contact Meyerton

016 0042352

24 Glynn Street
Rothdene,
Meyerton,
1961



Web Ref DPR19287



R1,395,000

🛏 3 🚿 2

Monthly Bond Repayment R13,927.40

Calculated over 20 years at 10.5% with no deposit.

Transfer Costs R40,569.00 **Bond Costs** R27,105.00

These calculations are only a guide. Please ask your conveyancer for exact calculations.

Monthly Rates R600

Family Home in Henley On Klip

Situated in the residential suburb of Henley on Klip within the financially sound Midvaal municipality, this delightful property offers an exceptional blend of comfort, self-sufficiency, and versatility. Situated on a generous 1017sqm stand, the home caters to family living while offering potential rental income opportunities.

The main residence features three spacious bedrooms and two bathrooms, providing ample space for relaxed, comfortable living.

The inviting living room, warmed by a classic anthracite stove, creates a cozy atmosphere ideal for unwinding, while an adjacent area provides an excellent space for entertaining guests. The kitchen ensures effortless meal preparation and functionality.

Sustainability is at the forefront with a comprehensive solar system, including solar panels, an inverter, and batteries,...

Features

Pets Allowed	Yes		
Interior		Exterior	Sizes
Bedrooms	3	Carports / Parkings	2
Bathrooms	2	Security	Yes
Kitchens	1	Pool	No
Recep. Rooms	2	Views	False
Furnished	No		
			Land Size 1,017m²