

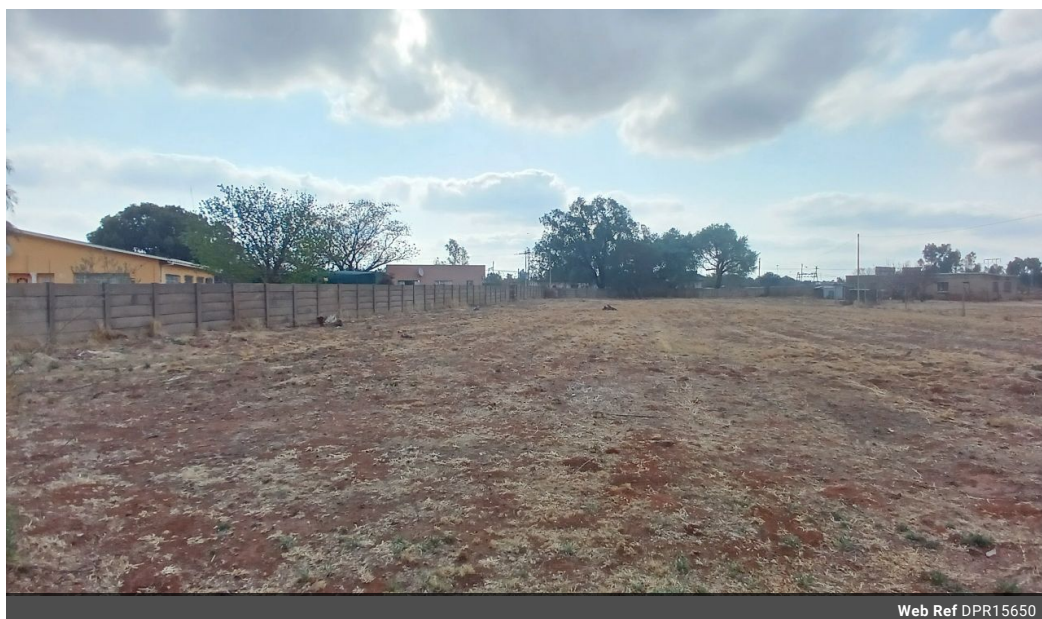


**Divan Booyens**  
079 022 9922  
divanbooyens@dpg.co.za

Contact **Meyerton**

**016 0042352**

24 Glynn Street  
Rothdene,  
Meyerton,  
1961



Web Ref DPR15650



**R370,000**

**Monthly Bond Repayment** R3,756.35

Calculated over 20 years at 10.75% with no deposit.

**Transfer Costs** R16,806.00    **Bond Costs** R11,960.00

These calculations are only a guide. Please ask your conveyancer for exact calculations.

**Monthly Rates** R1,000

### Large Vacant Stand Ideally Located!

Situated on a spacious 2286 square meters, this property offers ample room for building your dream home or investment property. Nestled in a developing area, the location provides the perfect opportunity for future growth and value appreciation.

Its proximity to essential amenities such as schools, shopping centers, and healthcare facilities ensures convenience for daily living while still offering the tranquility of a growing neighborhood. This expansive stand is ideal for those looking to create a custom home with plenty of space for outdoor living, gardens, or entertainment areas. Now is the time to make your dreams a reality and secure this prime piece of land in a promising location.

### Features