



Estelle Spies
0734037057
estellespies@dpg.co.za

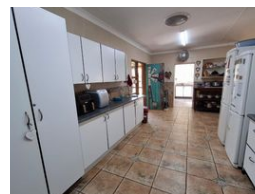
Contact Meyerton

016 0042352

24 Glynn Street
Rothdene,
Meyerton,
1961



Web Ref DPR19593



R1,680,000

4 2 4

Monthly Bond Repayment R17,055.85

Calculated over 20 years at 10.75% with no deposit.

Transfer Costs R53,839.00 **Bond Costs** R30,875.00

These calculations are only a guide. Please ask your conveyancer for exact calculations.

Monthly Rates R1,500

Big Family Home Boasting Flatlet!

Welcome to this spacious and well-appointed 4-bedroom family home situated in a sought-after and secure neighborhood. The main house features four generously sized bedrooms, including a luxurious main bedroom with a full en-suite bathroom. A second well-fitted bathroom serves the additional bedrooms. The heart of the home boasts a large, open-plan living area that seamlessly connects the dining room and family lounge, ideal for entertaining and everyday family living. The expansive kitchen offers ample cupboard space, a separate scullery, and functionality for the modern family.

A separate flatlet with its own private entrance adds exceptional value, featuring two spacious bedrooms with built-in cupboards, a comfortable living area, a fully equipped kitchen, and a full bathroom. Perfect for extended family, guests, or rental...

Features

Pets Allowed	Yes				
Interior		Exterior		Sizes	
Bedrooms	4	Garages	4	Land Size	1,996m²
Bathrooms	2	Carports / Parkings	7		
Kitchens	1	Security	Yes		
Recep. Rooms	2	Dom. Accom.	1		
Studies	1	Pool	No		
Furnished	No	Views	False		