



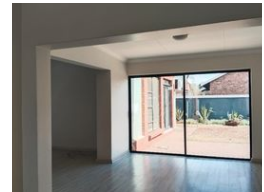
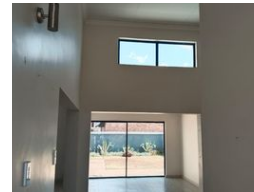
Roxy Rose
0726520893
roxyrose@dpg.co.za

Contact Meyerton
016 0042352

24 Glynn Street
Rothdene,
Meyerton,
1961



Web Ref DPR21035



R1,960,000

🛏 3 🚿 2 🚗 2

Monthly Bond Repayment R19,568.25

Calculated over 20 years at 10.5% with no deposit.

Transfer Costs R72,908.00 **Bond Costs** R32,760.00

These calculations are only a guide. Please ask your conveyancer for exact calculations.

Monthly Levy R1,300 **Monthly Rates** R1,200

Luxurious Townhouse on The Golfcourse

Nestled in the heart of Meyerton Central, this ultra-modern townhouse offers the perfect blend of style, comfort, and convenience. Situated on a sought-after golf course, this "lock up and go" property is ideal for professionals, families, or retirees seeking secure, low-maintenance living without compromising on space or luxury. Step into expansive open-plan living areas, where a bright lounge and dining room flow seamlessly into a sleek, modern kitchen boasting granite countertops and a separate scullery. High ceilings with exposed wooden beams add a touch of rustic charm and create an airy, spacious atmosphere throughout.

This beautifully designed home features 3 generously sized bedrooms, all with built-in cupboards. The first bathroom is fitted with a modern shower, while the main bedroom offers a private en-suite...

Features

Pets Allowed	Yes				
Interior		Exterior		Sizes	
Bedrooms	3	Garages	2	Land Size	500m²
Bathrooms	2	Carports / Parkings	2		
Kitchens	1	Security	Yes		
Recep. Rooms	2	Pool	No		
Furnished	No	Views	False		
Extras					
Alarm System Electric Fencing Electric Garage Electric Gate Outdoor Beams Intercom					