



Sandy Annandale
0833217850
sandyannandale@dpg.co.za



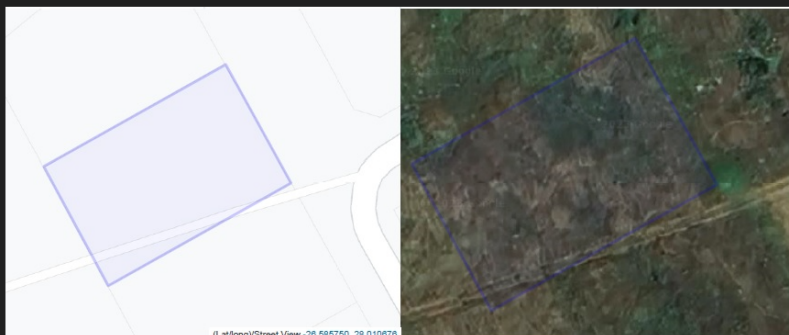
Rene Atterbury
0735730818

reneatterbury@dpg.co.za

Contact **Meyerton**

016 0042352

24 Glynn Street
Rothdene,
Meyerton,
1961



Web Ref DPR20169



R370,000

Monthly Bond Repayment R3,694.01

Calculated over 20 years at 10.5% with no deposit.

Transfer Costs R16,862.00 **Bond Costs** R11,960.00

These calculations are only a guide. Please ask your conveyancer for exact calculations.

Vacant Stand in Meyerton South

This well-positioned stand offers a fantastic development opportunity in the sought-after Midvaal area. Zoned "Residential 2" for 2 sectional title units, the property is ideal for a small-scale residential project or dual living setup. With bulk contributions already paid, the site is fully prepped and ready to build, making it a perfect choice for developers or investors looking for a hassle-free start. The stand is located in an area where quality housing is in growing demand, ensuring strong long-term value.

All key municipal services – water, sewerage, and electricity – are immediately available from the Midvaal Local Municipality, saving both time and connection costs. The infrastructure is in place, and the groundwork has been done, allowing for a smooth transition from purchase to construction. Please note: for vacant...

Features