

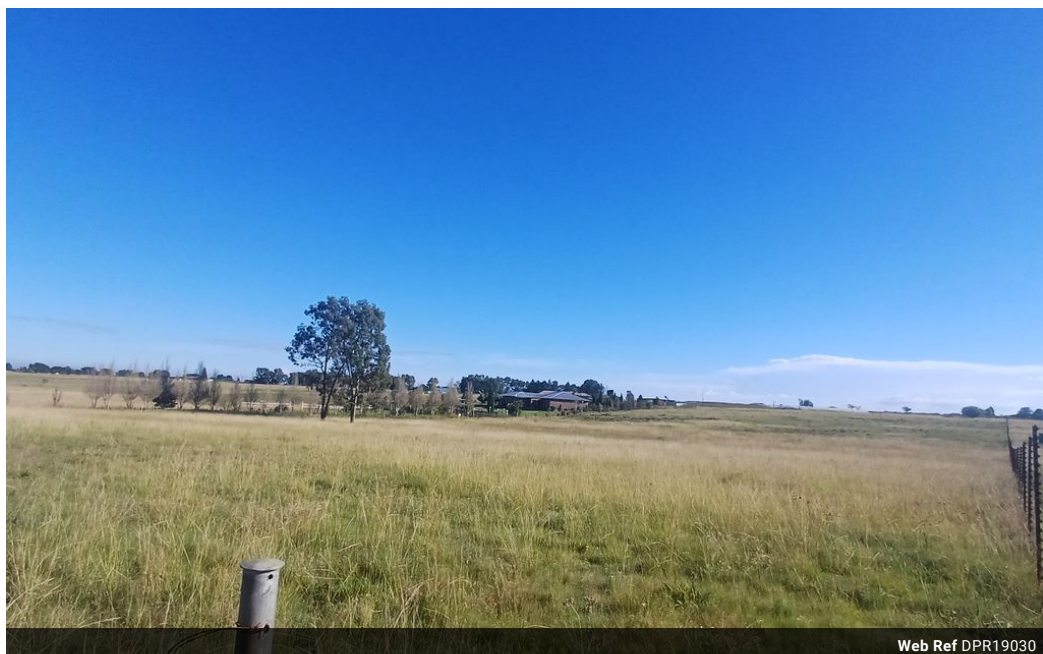


**Isabel Lombard**  
0848304864  
isabellombard@dpg.co.za

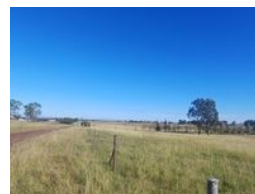
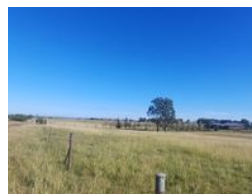
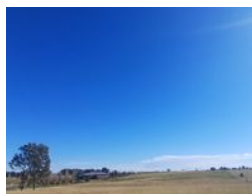
Contact **Meyerton**

**016 0042352**

24 Glynn Street  
Rothdene,  
Meyerton,  
1961



Web Ref DPR19030



# R505,000

**Monthly Bond Repayment** R5,126.91

Calculated over 20 years at 10.75% with no deposit.

**Transfer Costs** R21,217.00      **Bond Costs** R15,795.00

These calculations are only a guide. Please ask your conveyancer for exact calculations.

**Monthly Rates** R577

### Vacant Agricultural Stand in Nelsonia

We are delighted to present this exceptional 2.8-hectare agricultural stand located in the highly sought-after Nelsonia area of Meyerton. This flat, vacant land is perfectly suited for small-scale or mixed farming endeavors, as well as for those looking to escape to a peaceful rural lifestyle while still enjoying convenient access to essential amenities. The property is strategically situated just 15 minutes from Meyerton Central, Henley on Klip, and Vereeniging, with easy access to major roads such as the R42 and R59. Additionally, it is only an hour's drive from Johannesburg, making it an ideal choice for those seeking the perfect blend of serene countryside living and urban convenience.

This property offers numerous advantages, including the absence of dolomite testing requirements, which means you can develop with...

### Features