

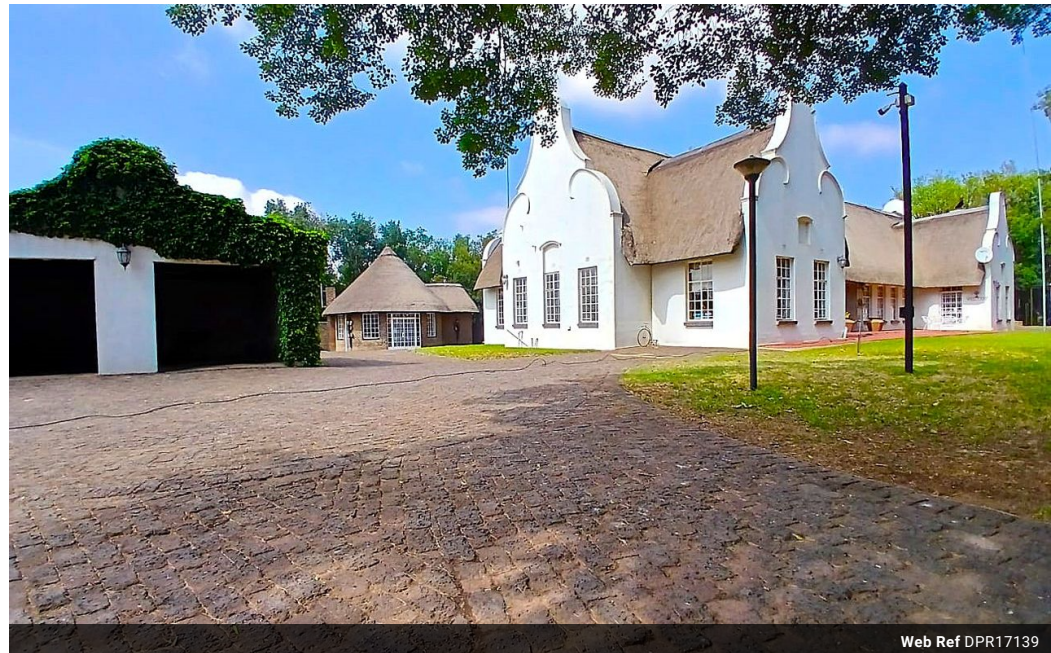


**Isabel Lombard**  
0848304864  
isabellombard@dpg.co.za

Contact Meyerton

016 0042352

24 Glynn Street  
Rothdene,  
Meyerton,  
1961



Web Ref DPR17139



**R16,000,000**

4 2.5 2

**Monthly Bond Repayment** R162,436.63

Calculated over 20 years at 10.75% with no deposit.

**Transfer Costs** R1,730,521.00 **Bond Costs** R113,285.00

These calculations are only a guide. Please ask your conveyancer for exact calculations.

**Monthly Rates** R1,158

### A Rare Investment Opportunity for Development

Located in the heart of Meyerton, this 76.57-hectare farm is a prime piece of real estate offering endless possibilities for the discerning investor. Whether you are looking to develop a luxury lifestyle estate, launch a recreational tourism business, or pursue agricultural ventures, this property provides a versatile canvas to bring your vision to life. Two Magnificent Farmhouses: The property boasts two expansive farmhouses, one of which is a historical heritage building, dating back to the original farm. The main home offers 400m<sup>2</sup> of living space, perfect for family living or as a private estate residence. Each home is entirely self-contained, with its own entrance and fenced-off area for privacy and security. Operational Infrastructure: A large, fully-equipped workshop is at the heart of this property, featuring two diesel...

### Features

Pets Allowed		Yes			
Interior				Sizes	
Bedrooms	4	Exterior		Land Size	76Ha
Bathrooms	2.5	Garages	2		
Kitchens	1	Carports / Parkings	20		
Recep. Rooms	3	Security	Yes		
Studies	1	Dom. Accom.	2		
Furnished	No	Pool	No		
		Views	True		