



Patricia Bloem
0815281296
patriciab@dpg.co.za



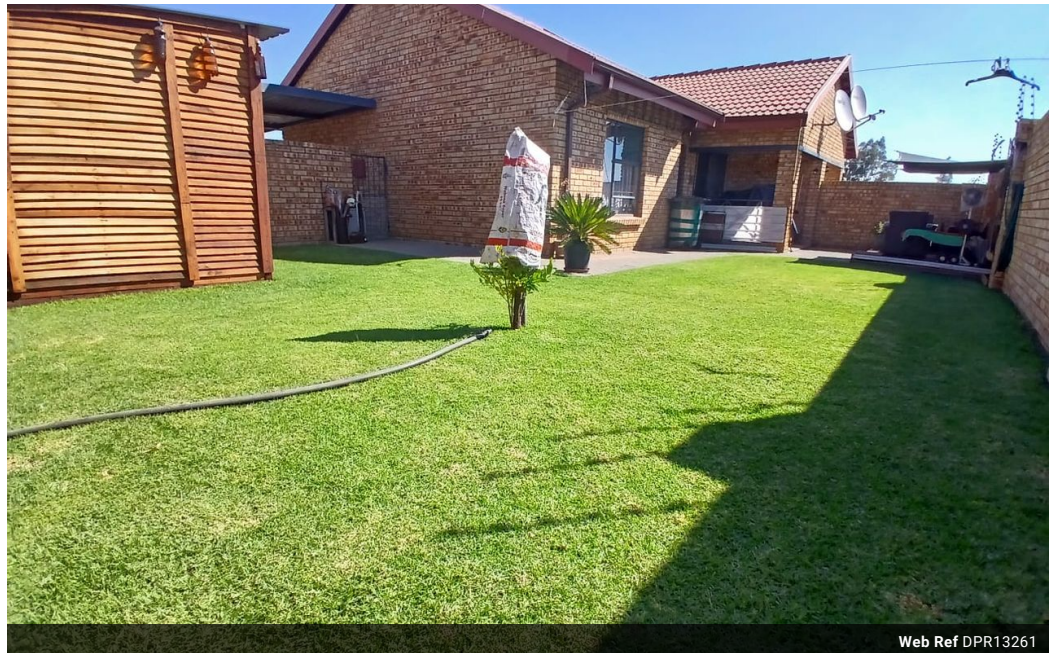
Reghardt Van Staden
074 969 5973

reghardtvanstaden@dpg.co.za

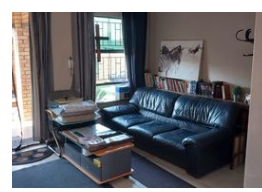
Contact **Meyerton**

016 0042352

24 Glynn Street
Rothdene,
Meyerton,
1961



Web Ref DPR13261



R850,000

2 1

Monthly Bond Repayment R8,629.45

Calculated over 20 years at 10.75% with no deposit.

Transfer Costs R28,244.00 **Bond Costs** R21,450.00

These calculations are only a guide. Please ask your conveyancer for exact calculations.

Monthly Levy R985 **Monthly Rates** R932

2 Bedroom home in a security complex in Riversdale

Welcome to this delightful 2-bedroom home, perfectly situated in the secure and highly sought-after Riversdale complex. Offering an ideal blend of comfort and convenience, this cozy abode is perfect for first-time buyers, small families, or those looking to downsize without compromising on quality. It is also an amazing addition to investors inventories.

Upon entering, you'll be greeted by a warm and inviting living area, flooded with natural light. The spacious layout provides an excellent space for relaxation and entertaining. The modern kitchen is a standout feature, equipped with elegant granite countertops that offer both style and functionality, along with ample storage space for all your culinary needs.

The two well-sized bedrooms are designed to be peaceful retreats, with enough room to comfortably accommodate your...

Features

Pets Allowed	Yes		
Interior		Exterior	Sizes
Bedrooms	2	Carports / Parkings	1
Bathrooms	1	Security	Yes
Kitchens	1	Pool	No
Recep. Rooms	1	Views	False
Furnished	No		
			Floor Size 68m²