



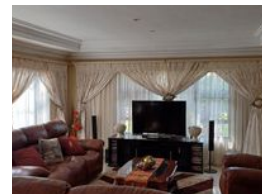
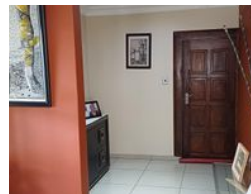
Isabel Lombard
0848304864
isabellombard@dpg.co.za

Contact Meyerton
016 0042352

24 Glynn Street
Rothdene,
Meyerton,
1961



Web Ref DPR16233



R3,000,000

🛏 5 🚿 3 🚗 2

Monthly Bond Repayment R30,456.87

Calculated over 20 years at 10.75% with no deposit.

Transfer Costs R160,211.00 **Bond Costs** R42,185.00

These calculations are only a guide. Please ask your conveyancer for exact calculations.

Monthly Rates R2,100

Stunning Directors' Home in Riversdale

Perfect for Extended Families. Discover your dream home in the heart of Riversdale! This exquisite property is designed for spacious living and entertaining, ideal for extended families seeking both comfort and luxury. Complete with five Massive Bedrooms. Enjoy generous living space with built-in cupboards and elegant laminated flooring throughout. Three Bathrooms that you can indulge in the opulence of an en-suite bathroom featuring a double basin, king-size bath, and a jet shower, along with two additional well-appointed bathrooms. Gourmet Kitchen a chef's paradise, the kitchen is equipped with high-end appliances and finishes, perfect for culinary enthusiasts. Entertainment Oasis with an enclosed outdoor Lapa boasts a built-in bar and braai, seamlessly connecting to the sparkling pool—ideal for gatherings with family and...

Features

Pets Allowed		Yes			
Interior				Exterior	
Bedrooms	5			Garages	2
Bathrooms	3			Carports / Parkings	4
Kitchens	1			Security	Yes
Recep. Rooms	2			Dom. Accom.	1
Studies	1			Pool	Yes
Furnished	No			Views	False
				Sizes	
				Land Size	1,418m²

