



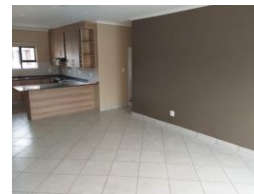
Sandy Annandale
0833217850
sandyannandale@dpg.co.za

Contact Meyerton
016 0042352

24 Glynn Street
Rothdene,
Meyerton,
1961



Web Ref DPR13885



R1,250,000

3 1 2

Monthly Bond Repayment R12,690.36

Calculated over 20 years at 10.75% with no deposit.

Transfer Costs R36,117.00 **Bond Costs** R27,105.00

These calculations are only a guide. Please ask your conveyancer for exact calculations.

Monthly Levy R850 **Monthly Rates** R1,100

3 Bdrm townhouse for sale in Riversdale.

This inviting property features three spacious bedrooms, including a main bedroom with an en-suite bathroom for added privacy and comfort. The home boasts two full bathrooms, ensuring convenience for family and guests alike.

The heart of the home is an open-plan lounge, dining, and kitchen area, designed with modern living in mind. The kitchen is equipped with elegant granite countertops, making it a delightful space for cooking and entertaining.

Step outside to your private garden, perfect for relaxation or outdoor activities. This pet-friendly property sits on a generous 600 sqm private stand within a secure complex, offering peace of mind and plenty of space for your furry friends.

Additional features include an individual water meter and pre-paid electricity, providing you with control over your utilities. A double...

Features

Pets Allowed Yes

Interior

Bedrooms	3
Bathrooms	1
Kitchens	1
Recep. Rooms	2
Furnished	No

Extras

Alarm System

Exterior

Garages	2
Security	Yes
Pool	No
Views	False

Sizes

Land Size	133m²
-----------	-------