



Roxy Rose
0726520893
roxyrose@dpg.co.za

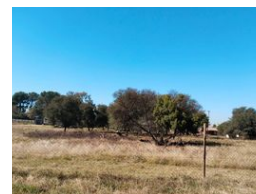
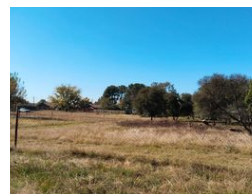
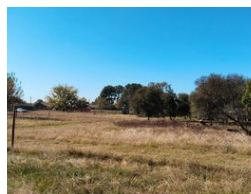
Contact **Meyerton**

016 0042352

24 Glynn Street
Rothdene,
Meyerton,
1961



Web Ref DPR19358



R355,000

Monthly Bond Repayment R3,544.25

Calculated over 20 years at 10.5% with no deposit.

Transfer Costs R16,862.00 **Bond Costs** R11,960.00

These calculations are only a guide. Please ask your conveyancer for exact calculations.

Monthly Rates R850

Vacant Stand In Riversdale

Discover the perfect canvas for your dream home on this expansive 1123 m² flat stand, offering ample space for your vision to come to life. Whether you envision a tranquil retreat, or a hobby farm, this land provides the freedom to create a sanctuary tailored to your desires. Nestled in a serene neighborhood, the property is enveloped by lush greenery and mature trees, ensuring privacy and a peaceful ambiance. The gentle topography simplifies construction, reducing groundwork and facilitating efficient development. Its generous size and flat terrain offer endless possibilities for landscaping, gardening, or recreational activities.

This land is ideally situated, combining the tranquility of rural living with convenient access to urban amenities. Local shops, schools, and recreational facilities are within easy reach, making it...

Features

