



**Roxy Rose**  
0726520893  
roxyrose@dpg.co.za

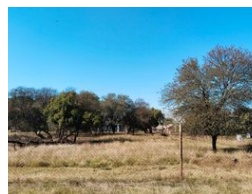
Contact **Meyerton**

**016 0042352**

24 Glynn Street  
Rothdene,  
Meyerton,  
1961



Web Ref DPR19359



## R355,000

**Monthly Bond Repayment** R3,604.06

Calculated over 20 years at 10.75% with no deposit.

**Transfer Costs** R16,806.00    **Bond Costs** R11,960.00

These calculations are only a guide. Please ask your conveyancer for exact calculations.

**Monthly Rates** R850

### Vacant Land In Riversdale

Situated in the highly sought-after suburb of Riversdale, Meyerton, this expansive 1,123 m<sup>2</sup> stand offers an exceptional opportunity to create the home you've always envisioned. With ample space for a spacious residence and additional outdoor amenities, this property provides the perfect canvas for your dream home. Additionally, no dolomite testing is required, simplifying the building process.

Riversdale is experiencing significant growth, making this an opportune time to invest in this tranquil yet developing area. Whether you're looking to build your forever home or seeking a promising investment, this property offers both. Don't miss out on this incredible opportunity. Contact me today to arrange a viewing and take the first step toward making this prime stand your own.

### Features

