



Roxy Rose
0726520893
roxyrose@dpg.co.za

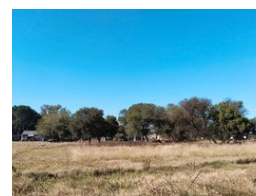
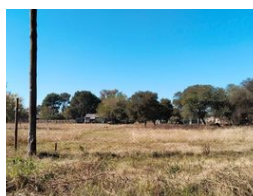
Contact **Meyerton**

016 0042352

24 Glynn Street
Rothdene,
Meyerton,
1961



Web Ref DPR19360



R355,000

Monthly Bond Repayment R3,604.06

Calculated over 20 years at 10.75% with no deposit.

Transfer Costs R16,806.00 **Bond Costs** R11,960.00

These calculations are only a guide. Please ask your conveyancer for exact calculations.

Monthly Rates R850

Corner Vacant Stand in Riversdale

Discover the perfect setting for your dream home on this expansive 1,111 m² corner stand, nestled in the peaceful suburb of Riversdale, Meyerton. This prime property offers ample space for a spacious residence, garden, and outdoor amenities, providing a serene environment for family living. Situated in a quiet area, the stand is enveloped by lush greenery and mature trees, ensuring privacy and a tranquil ambiance. The gentle topography simplifies construction, reducing groundwork and facilitating efficient development. Its generous size and corner location offer endless possibilities for landscaping, gardening, or recreational activities.

This land is ideally situated, combining the tranquility of suburban living with convenient access to urban amenities. Local shops, schools, and recreational facilities are within easy reach,...

Features

