



Divan Booyens
079 022 9922
divanbooyens@dpg.co.za



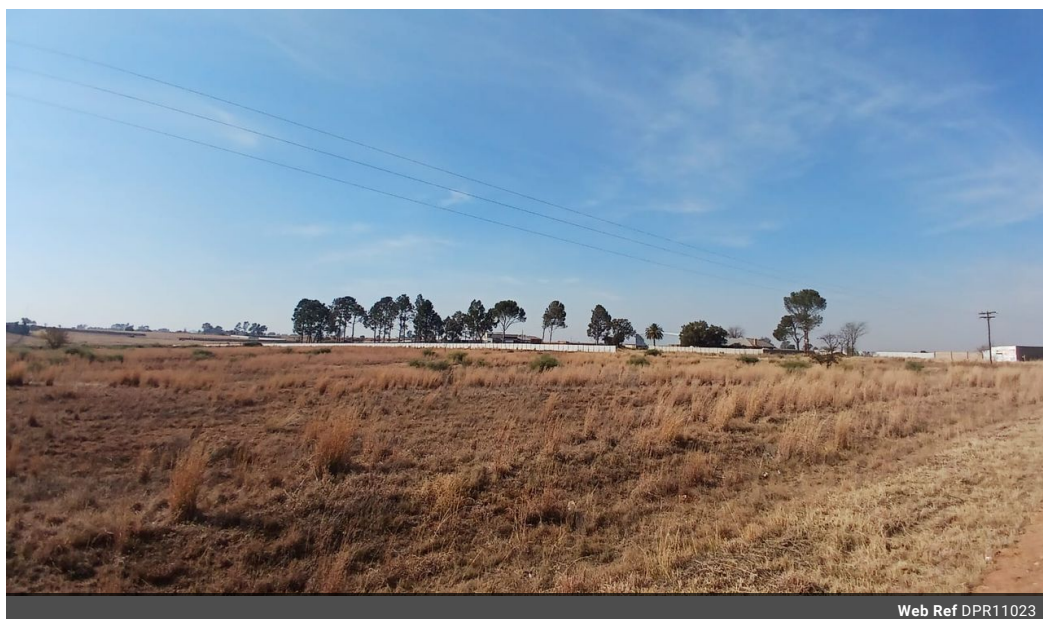
Carl Kleynhans
0604701480

carlkleynhans@dpg.co.za

Contact **Meyerton**

016 0042352

24 Glynn Street
Rothdene,
Meyerton,
1961



R1,650,000

Monthly Bond Repayment R16,751.28

Calculated over 20 years at 10.75% with no deposit.

Transfer Costs R52,453.00 **Bond Costs** R30,875.00

These calculations are only a guide. Please ask your conveyancer for exact calculations.

Monthly Rates R1,500

Huge Stand Offering Ample Opportunities!

Possibilities are endless with this expansive vacant agricultural land, offering a wealth of development opportunities for the discerning investor or developer. Strategically situated, the land can be rezoned for township establishment, opening doors to a variety of potential uses, including residential, commercial, or industrial properties. This flexibility allows for the creation of a vibrant, multi-use community that caters to diverse needs and enhances the value of the area.

Furthermore, the land can be subdivided into 72 full-title stands ranging from 700sqm to 1000sqm, making it ideal for residential development. This subdivision would enable the creation of a spacious and well-planned residential neighborhood, attracting families and individuals looking for ample living space and a sense of community. With its prime...

Features

