



**Isabel Lombard**  
0848304864  
isabellombard@dpg.co.za

Contact **Meyerton**

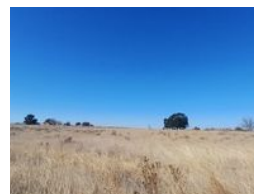
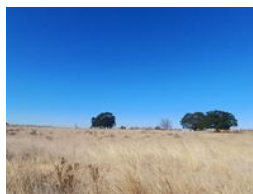
**016 0042352**

24 Glynn Street  
Rothdene,  
Meyerton,  
1961

## 8Ha Vacant Land For Sale in Witkop



Web Ref DPR20301



**R1,612,000**

**Monthly Bond Repayment** R16,365.49

Calculated over 20 years at 10.75% with no deposit.

**Transfer Costs** R51,313.00    **Bond Costs** R30,875.00

These calculations are only a guide. Please ask your conveyancer for exact calculations.

**Monthly Rates** R173.8

### 8.5 Ha Vacant land in Witkop

This massive 8.5-hectare agricultural property, ideally located near the R59 Highway just off the Randvaal offramp, presents a remarkable opportunity for aspiring farmers and agricultural investors. Zoned for agricultural use, the land is well-suited for a variety of farming activities and comes equipped with a functional borehole, ensuring a reliable water supply for planting and irrigation needs.

Situated in the sought-after area of Witkop, where property types range from houses and apartments to farms, this versatile land offers the perfect setting for those seeking to embrace rural living or expand their agricultural operations. With its prime location and essential infrastructure, this property is a valuable investment not to be missed.

### Features