



Vickey Dormehl
083 973 2065
vickeydm@dpg.co.za



Sue Speechly
082 444 0001
suespeechly@dpg.co.za

Contact Northern Suburbs
(Western Cape)

012 3323677

Sonstraal Heights,
63 Melody Ridge,
Durbanville

On Show

🕒 13:00 to 15:00

📅 Sunday, 25 May 2025

Directions

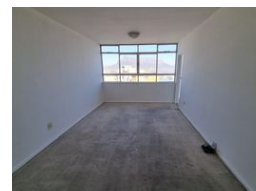
Viewing by appointment!

FEATURED



ON SHOW

Web Ref DPR19492



R2,150,000

🛏 2 🚿 2

Monthly Bond Repayment R22,192.05

Calculated over 20 years at 11% with no deposit.

Transfer Costs R86,947.00 **Bond Costs** R34,625.00

These calculations are only a guide. Please ask your conveyancer for exact calculations.

Monthly Levy R2,208 **Monthly Rates** R529

Spacious 2-Bedroom Apartment with Endless Potential

Wake up each morning to breathtaking, uninterrupted views of Table Mountain from every window in this spacious 2-bedroom, 2-bathroom apartment — a rare opportunity now on the market.

This timeless property offers incredible potential for both investors and first-time buyers. With just a few modern touches, it can easily be transformed into a stylish, high-value home. The generous layout features a light-filled living area that opens up to spectacular mountain vistas, and with the kitchen ideally positioned for an open-plan redesign, there's endless scope to create a seamless flow from the entrance through to the living...

Features

Interior

Bedrooms	2
Bathrooms	2
Kitchens	1
Recep. Rooms	2
Furnished	No

Exterior

Carports / Parkings	1
Security	Yes
Pool	No
Views	False

Sizes

Floor Size	84m²
------------	------