

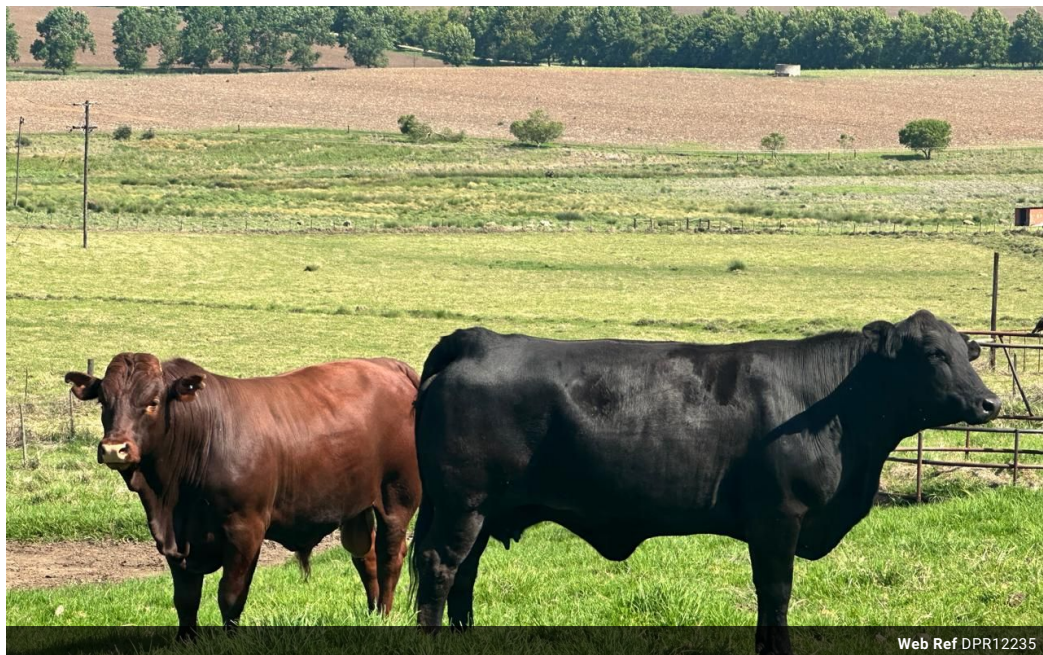


Roy Emanuel
082 801 5914
roye@lantic.net

Contact Farms and
Smallholdings

036 3523147

50a Main Street
Howick
3290



Web Ref DPR12235



R62,000,000

13 5 4

Monthly Bond Repayment R629,441.95

Calculated over 20 years at 10.75% with no deposit.

Transfer Costs R7,732,371.00 **Bond Costs** R132,285.00

These calculations are only a guide. Please ask your conveyancer for exact calculations.

Monthly Rates R620

HIGHLY PRODUCTIVE BEEF RANCH AND CROP FARM.

Highly productive beef cattle and crop farm situated in the warm area of Mooi River where cattle survive on the veld in Winter. The farm is made up as follows: 213ha of veld; 63ha of excellent kikuyu pastures; 40ha eragrostis getting 3 cuts a year; 245ha of dry land arable; 39ha of registered water rights. There are two large homesteads, three cottages, three large farm sheds with lock up facilities and a strong room plus large tractor and implement shed. Large built-in generator.

There are 7 streams running through the farm, 16 stock dams and 3 good irrigation dams, plus 8 boreholes. Good sheep and cattle handling facilities with spray race. Eskom power. The farm only price is R62,000,000 plus VAT.

There are 618 breeding females and 22 bulls. Price for livestock R14,000,000 plus VAT.

There is a full range of...

Features

Pets Allowed Yes

Interior

| | |
|--------------|----|
| Bedrooms | 13 |
| Bathrooms | 5 |
| Kitchens | 5 |
| Recep. Rooms | 10 |
| Studies | 2 |
| Furnished | No |

Exterior

| | |
|---------------------|-------|
| Garages | 4 |
| Carports / Parkings | 5 |
| Security | No |
| Dom. Accom. | 2 |
| Pool | No |
| Views | False |

Sizes

| | |
|-----------|---------|
| Land Size | 2,525Ha |
|-----------|---------|