

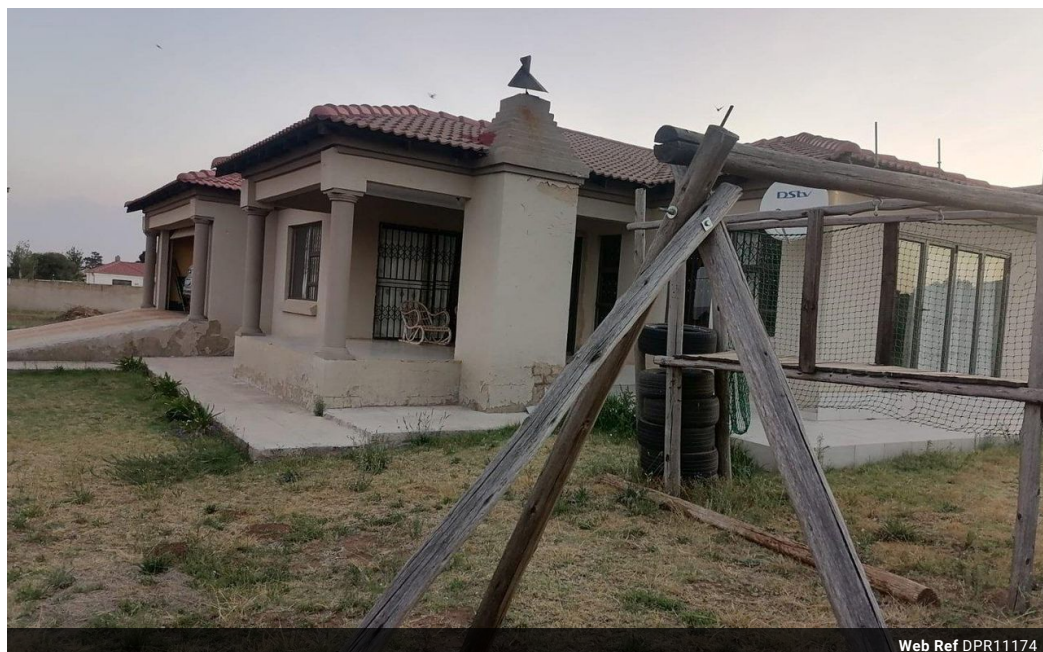


Adelaide Ngwenya
0682207670
adelaidengwenya@dpg.co.za

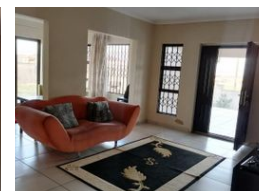
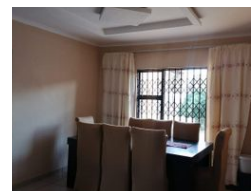
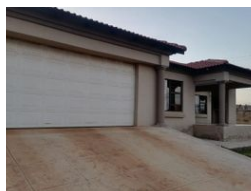
Contact Heidelberg

016 4232876

Vision 21 Industrial Park
Shop 26
Steel Road
Duncanville
Vereeniging



Web Ref DPR11174



R1,450,000

3 3 2

Monthly Bond Repayment R14,720.82

Calculated over 20 years at 10.75% with no deposit.

Transfer Costs R44,285.00 **Bond Costs** R28,990.00

These calculations are only a guide. Please ask your conveyancer for exact calculations.

Monthly Rates R2,200

MODERN PROPERTY WITH FLATLET SALE

This beautiful home is located in James Park next to most amenities in Nigel and is situated close to Heidelberg mall and the N3 highway. This home boasts a spacious lounge, dining room, tv room and a study which can be converted to an extra lounge or entertainment area. There are 3 bedrooms of which the main bedroom comes with an en-suite bathroom and cupboards. Then you also have other 2 extra bathrooms. The kitchen is beautiful with ample built-in cupboards. You will have lovely patio with a built-in braai to entertain your family and friends.

What makes this property a very big investment is not just the modern features, but the flatlet which offers one an open plan kitchen with built-in cupboards, a lounge area and a bedroom with an en-suite bathroom. This can be used as a granny flat, a teen pad or for an extra income....

Features

Pets Allowed	Yes		
Interior		Exterior	Sizes
Bedrooms	3	Garages	2
Bathrooms	3	Security	Yes
Kitchens	1	Dom. Accom.	1
Recep. Rooms	4	Pool	No
Furnished	No	Views	False
			Land Size
			1,972m²

