

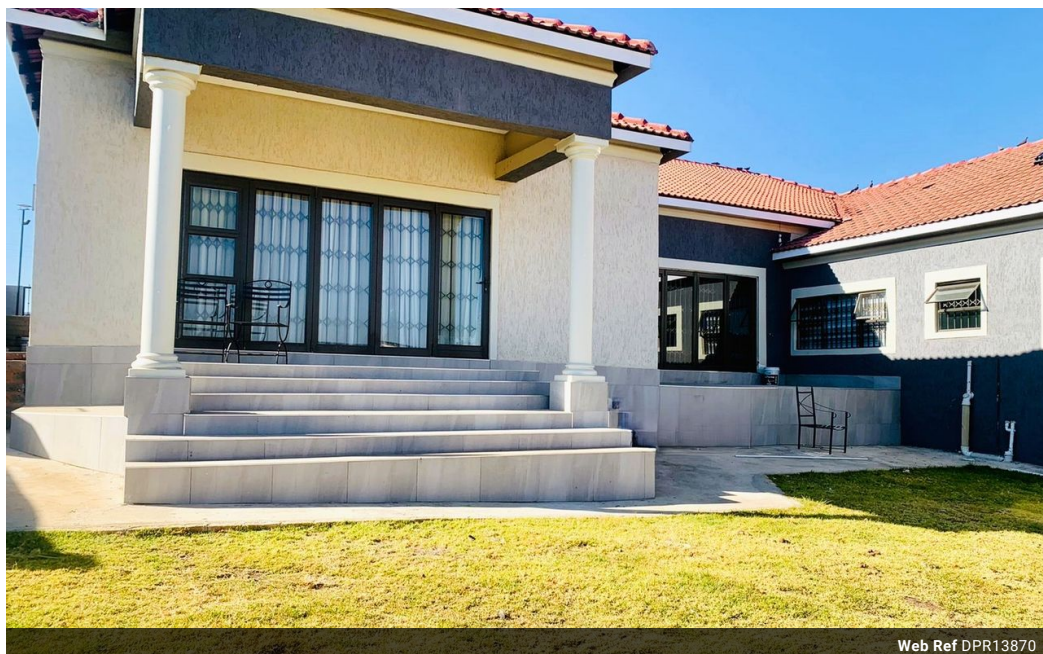


Vuyo Maphanga
0790984700
vuyomaphanga@dpg.co.za

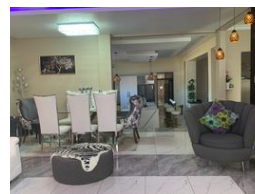
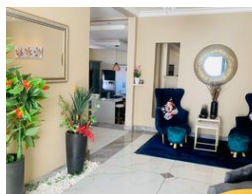
Contact Heidelberg

016 4232876

Vision 21 Industrial Park
Shop 26
Steel Road
Duncanville
Vereeniging



Web Ref DPR13870



R1,900,000

🛏 5 🚿 3.5 🚗 4

Monthly Bond Repayment R19,289.35

Calculated over 20 years at 10.75% with no deposit.

Transfer Costs R69,206.00 **Bond Costs** R32,760.00

These calculations are only a guide. Please ask your conveyancer for exact calculations.

Monthly Rates R680

Exquisite 5-Bedroom Beauty in Kaydale!

Discover unparalleled luxury living in the tranquil neighbourhood of Kaydale, Jameson Park, where this exquisite 5-bedroom residence awaits. From spacious interiors to modern amenities, every detail is crafted to redefine your lifestyle. Step into a grand foyer leading to an elegant reception area, setting the stage for sophisticated gatherings. The open plan dining area seamlessly connects to a cozy family room, perfect for everyday living and entertaining. A culinary masterpiece awaits in the chef's kitchen, boasting contemporary appliances, ample storage, and sleek granite countertops—a focal point where culinary creations and family meals converge effortlessly. Five generously sized bedrooms offer comfort and privacy, each designed with large windows to welcome natural light and showcase serene views of the landscape. They...

Features

Pets Allowed		Yes			
Interior				Exterior	
Bedrooms	5			Garages	4
Bathrooms	3.5			Security	Yes
Kitchens	1			Pool	No
Recep. Rooms	3			Views	True
Studies	1				
Furnished	No				

Extras

Fibre Sliding Doors Water Tanks Solar Geyser Alarm System Indoor Beams Electric Gate
Granite Tops Gas Hob Open Plan Kitchen Centre Island

