



**Adelaide Ngwenya**  
0682207670  
adelaidengwenya@dpg.co.za

Contact Heidelberg

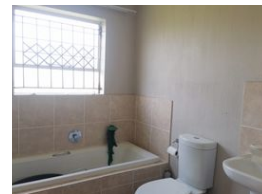
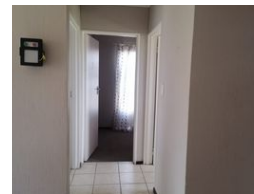
016 4232876

Vision 21 Industrial Park  
Shop 26  
Steel Road  
Duncanville  
Vereeniging

UNDER OFFER



Web Ref DPR17418



R600,000

2 1

**Monthly Bond Repayment** R6,091.37

Calculated over 20 years at 10.75% with no deposit.

**Transfer Costs** R21,217.00 **Bond Costs** R15,795.00

These calculations are only a guide. Please ask your conveyancer for exact calculations.

**Monthly Levy** R250 **Monthly Rates** R800

## 2 BEDROOM HOME IN SHARON PARK!

This 2-bedroom house is located in the sought-after Sharon Park Lifestyle Estate, offers a fantastic opportunity for first-time buyers or those looking to invest in a prime location. Situated in a secure, boom-gated estate, the property provides peace of mind with 24-hour security. It is conveniently located near public transport, making commuting easy, and is within close proximity to reputable schools in Springs, Springs Mall, hospitals, and various other amenities. The home features an open-plan lounge and kitchen, providing a spacious and functional living area.

The kitchen is well-designed and spacious, ideal for meal preparation and entertaining. The bathroom is neatly finished, offering essential comfort. The property also offers significant potential for future extensions, allowing you to personalize and expand the...

## Features

<b>Pets Allowed</b>	Yes			
<b>Interior</b>		<b>Exterior</b>		<b>Sizes</b>
Bedrooms	2	Security	Yes	Land Size
Bathrooms	1	Pool	No	295m²
Kitchens	1	Views	False	
Recep. Rooms	1			
Furnished	No			