

250m² Vacant Land For Sale in Sharon Park

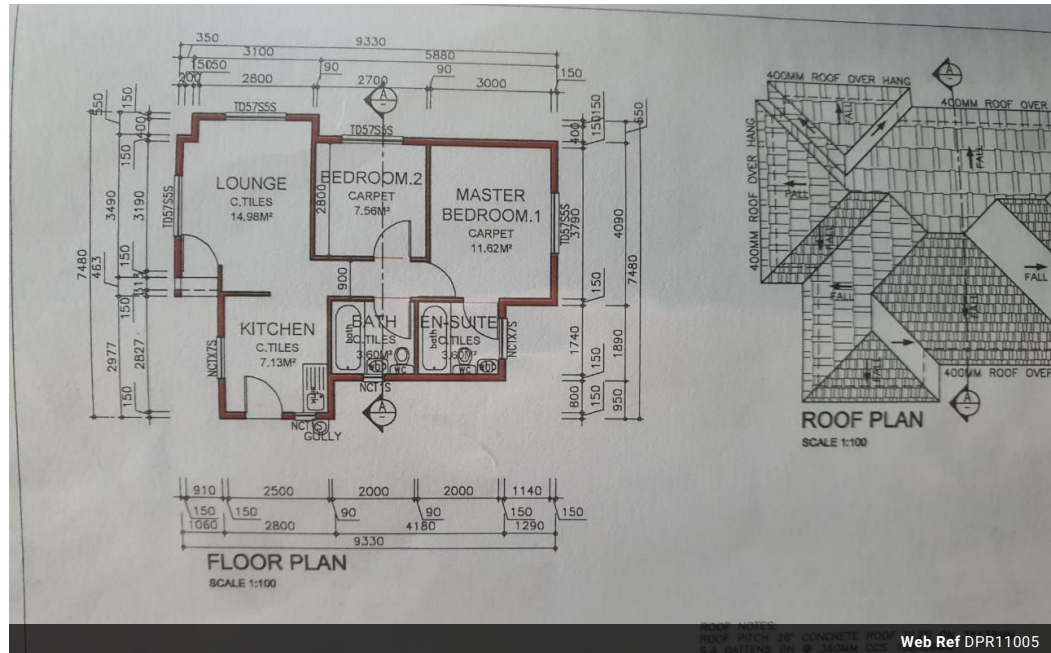


Adelaide Ngwenya
0682207670
adelaidengwenya@dpg.co.za

Contact Heidelberg

016 4232876

Vision 21 Industrial Park
Shop 26
Steel Road
Duncanville
Vereeniging



R685,000

Monthly Bond Repayment R6,954.32

Calculated over 20 years at 10.75% with no deposit.

Transfer Costs R23,730.00 **Bond Costs** R17,680.00

These calculations are only a guide. Please ask your conveyancer for exact calculations.

STANDS AND PLANS- NEW DEVELOPMENT

Choose your plot and then the house plan that you like... The different packages available start at 50 square meter houses that can be built up to 90 square meter houses. The properties offer 56 sqm² two bedrooms and 60 sqm² with one bathroom and from 65 sqm² going up are three bedrooms with two 2 baths/shower. All houses are Tuscan roof style, aluminum window frames and sliding doors.

It also comes with three side walls 1.2m and 100 sqm² garden. All the stands ranges from 230 square meter to 250 square meters. All the stands ranges from 230 square meter to 250 square meters. Plot and plan! Situated in Sharon Park Lifestyle Estate, conveniently situated near plenty of local amenities. The estate has a boom gate controlled by 24 hour security guards, making it a safe place to raise your kids and enjoy simple life...

Features



<https://www.dpgprop.co.za>