



**Melisa Scheepers**  
067 069 6946  
melisascheepers@dpg.co.za



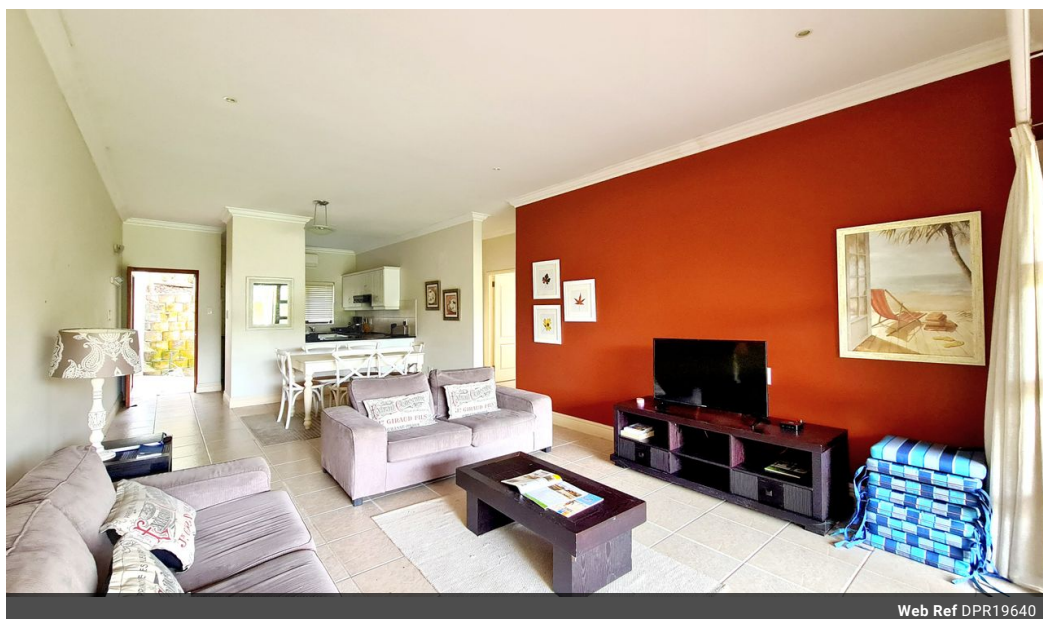
**Estean Bolleurs**  
067 069 6946

esteanbolleurs@dpg.co.za

Contact Westville A-Team

031 2664343

1 Knightbridge,  
16 Westville Road,  
Westville



Web Ref DPR19640



**R880,000**

2 2 1

**Monthly Bond Repayment** R8,785.74

Calculated over 20 years at 10.5% with no deposit.

**Transfer Costs** R28,334.00 **Bond Costs** R21,450.00

These calculations are only a guide. Please ask your conveyancer for exact calculations.

**Monthly Levy** R9,800 **Monthly Rates** R1,200

## Peaceful Living Right on the Green – 2-Bedroom Hideaway at Selborne Golf Estate

Welcome to a lifestyle where nature, golf, and comfort come together.

Tucked away in the lush Selborne Golf Estate, this 2-bedroom, 2-bathroom home is more than just a place to live—it's a retreat. Sitting right on the 4th hole, one of the estate's most picturesque and technical challenges, you'll wake up to rolling green views and the soothing sounds of birdlife.

Step inside and find an airy layout with natural light spilling into each room. The home is thoughtfully designed, with open living spaces that flow effortlessly into a tranquil patio area—perfect for morning coffee or sundowners while watching golfers tee off below.

## Features

### Interior

Bedrooms	2
Bathrooms	2
Kitchens	1
Recep. Rooms	2
Furnished	No

### Exterior

Garages	1
Security	Yes
Pool	No
Views	True

### Sizes

Floor Size	122m²
------------	-------

### Extras

Backup Water Golf Estate