



Estean Bolleurs
067 069 6946
esteanbolleurs@dpg.co.za



Melisa Scheepers
067 069 6946

melisascheepers@dpg.co.za

Contact Westville A-Team

031 2664343

1 Knightbridge,
16 Westville Road,
Westville

On Show



14:00 to 16:00



Sunday, 13 July 2025

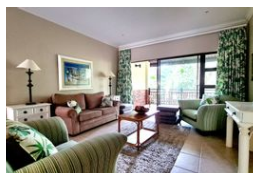
Directions

On show by appointment only. Please book your date and time in advance with your agent



ON SHOW

Web Ref DPR19645



R870,000

2 2 1

Monthly Bond Repayment R8,832.49

Calculated over 20 years at 10.75% with no deposit.

Transfer Costs R28,244.00 **Bond Costs** R21,450.00

These calculations are only a guide. Please ask your conveyancer for exact calculations.

Monthly Levy R9,800 **Monthly Rates** R1,200

2 BED | 2 BATH | 121m² | SELBORNE GOLF ESTATE | RIGHT ON THE FAIRWAY

Looking for a home that feels like a holiday? This one's got it all.

Perfectly positioned on the 4th hole of the stunning Selborne Golf Course, this 2-bedroom, 2-bathroom home gives you that "away from it all" feeling—without actually being far from anything.

At 121 square meters, it's just the right size: spacious enough to stretch out, easy enough to maintain. Whether it's a full-time home, a weekend spot, or an investment rental, it ticks the right boxes.

Solid Layout: Open-plan living, a great kitchen, and flow that makes sense. Everything feels comfortable and bright.

Nature All Around: The estate's full of wildlife—think...

Features

Interior

Bedrooms	2
Bathrooms	2
Kitchens	1
Recep. Rooms	2
Furnished	No

Exterior

Garages	1
Security	Yes
Pool	No
Views	True

Sizes

Floor Size	121m ²
------------	-------------------

Extras

Golf Estate