



Melisa Scheepers
067 069 6946
melisascheepers@dpg.co.za



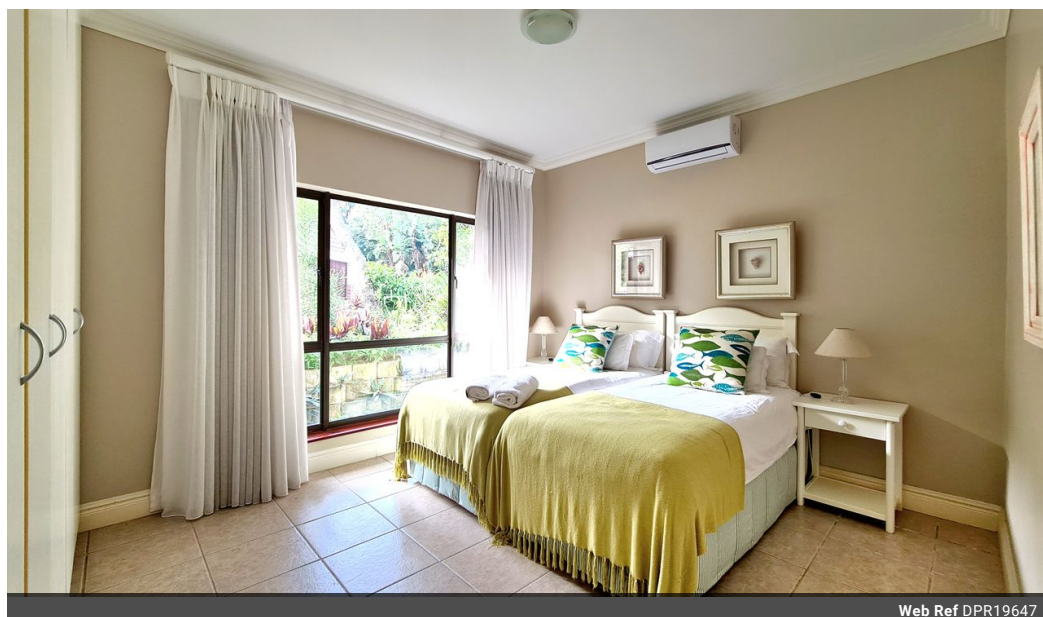
Estean Bolleurs
067 069 6946

esteanbolleurs@dpg.co.za

Contact Westville A-Team

031 2664343

1 Knightbridge,
16 Westville Road,
Westville



Web Ref DPR19647



R870,000

2 2 1

Monthly Bond Repayment R8,685.91

Calculated over 20 years at 10.5% with no deposit.

Transfer Costs R28,334.00 **Bond Costs** R21,450.00

These calculations are only a guide. Please ask your conveyancer for exact calculations.

Monthly Levy R9,800 **Monthly Rates** R1,200

Refined Living on the 4th

Simplicity. Space. Stillness.
This is the art of living well.

A 2-bedroom, 2-bathroom home with 121m² of elegantly designed space—positioned directly on the 4th hole of the renowned Selborne Golf Estate. Clean lines. Natural light. Golf course serenity just outside your window.

Essentials:

Golf Course Frontage
Elevated view over one of Selborne's most scenic holes. Private. Peaceful.

Architectural Flow

Open-plan interiors. Seamless indoor-outdoor transitions. High comfort.

Nature + Luxury

Forest surrounds. Birdlife, buck, quiet. Plus: spa, tennis, beach club, fine dining.

Location

Features

Interior

Bedrooms	2
Bathrooms	2
Kitchens	1
Recep. Rooms	2
Furnished	No

Extras

Golf Estate

Exterior

Garages	1
Security	Yes
Pool	No
Views	True

Sizes

Floor Size	121m ²
------------	-------------------