



**Logie Naidoo**  
082 455 6857  
logienaidoo@dpg.co.za

Contact KZN North

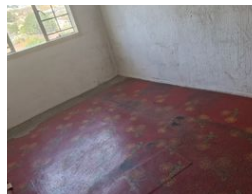
031 3500430

A1 Almil Centre  
47 Ashley Avenue  
Glenashley

## FEATURED



Web Ref DPR14834



## R750,000

🛏 3    🛁 1

**Monthly Bond Repayment** R7,487.85

Calculated over 20 years at 10.5% with no deposit.

**Transfer Costs** R25,877.00    **Bond Costs** R19,565.00

These calculations are only a guide. Please ask your conveyancer for exact calculations.

## RENOVATOR'S DREAM

CALLING ALL RENOVATORS!

Come view this corner duplex on huge land with plenty potential for investment to the right investor!

The property is situated on the corner of a line of duplexes and comprises of 3 bedrooms with bathroom and toilet upstairs, lounge and kitchen downstairs.

Can be revamped. Plans available to view on request.

R750 000 negotiable.

For further details please contact Logie Naidoo.

## Features

### Interior

Bedrooms	3
Bathrooms	1
Kitchens	1
Recep. Rooms	1
Furnished	No

### Exterior

Security	No
Pool	No
Views	False