



Mervin Donnelly
061 696 8809
mervin.d@dpg.co.za

Contact Head Office - Dormehl
Lite

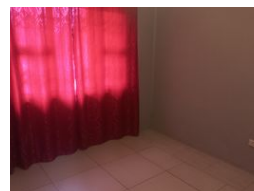
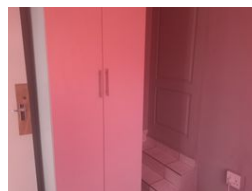
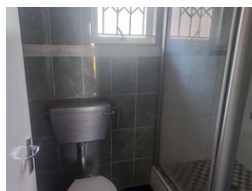
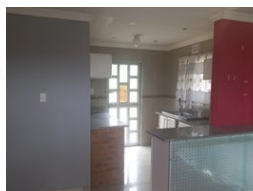
012 0000000

1170 Moulton Avenue
Waverley
0184

UNDER OFFER



Web Ref DPR845



R1,600,000

4 2

Monthly Bond Repayment R16,243.66

Calculated over 20 years at 10.75% with no deposit.

Transfer Costs R48,785.00 **Bond Costs** R28,990.00

These calculations are only a guide. Please ask your conveyancer for exact calculations.

Family home for sale in Phoenix!!!

Dormehl Phalane properties proudly presents this lovely family home for sale in Phoenix. This property consists of:
currently used as an office
high end modern finishes
large stand for future extensions
4 bedrooms
fully fitted kitchen with granite tops
family bathroom
ample parkings

To view this property please contact Mervin Donnelly

Features

Interior

Bedrooms	4
Bathrooms	2
Kitchens	1
Recep. Rooms	1
Furnished	No

Exterior

Security	No
Pool	No
Views	False