



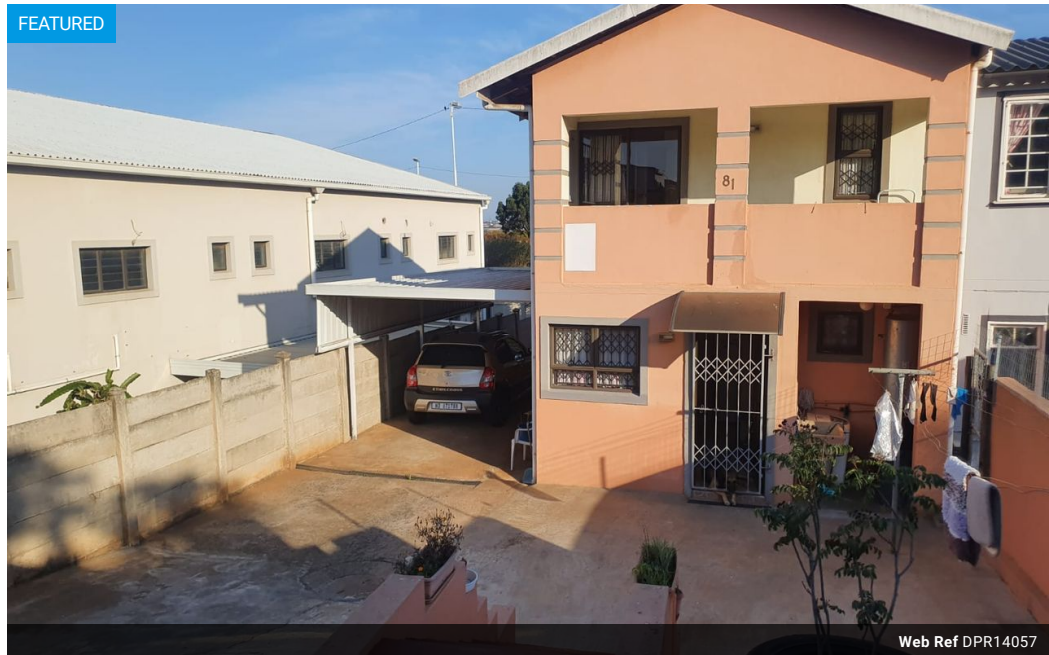
Avesh Harichander
062 291 9112
aves.h@dpg.co.za

Contact **Musgrave**

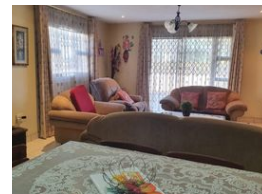
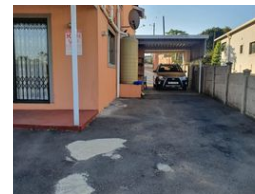
031 3165402

279 Problem Mkhize Road,
Essenwood,
Durban,
4001

FEATURED



Web Ref DPR14057



R960,000

2 2

Monthly Bond Repayment R9,584.45

Calculated over 20 years at 10.5% with no deposit.

Transfer Costs R30,502.00 **Bond Costs** R23,335.00

These calculations are only a guide. Please ask your conveyancer for exact calculations.

Monthly Rates R755

2-bedroom, semi-detached home for sale in Stanmore, Phoenix

Dormehl Phalane Musgrave presents a perfectly positioned, two-bedroom, semi-detached duplex for sale in Stanmore, Phoenix.

This home's master bedroom boasts an inviting en-suite and a generous walk-in closet and a private lounge, while the second bedroom extends to a charming balcony.

The well-equipped kitchen features built-in cupboards, granite counter tops and abundant storage space. There is a pantry and a guest toilet, while the lounge and diningroom are open-plan.

Six open parking spaces and shelter for one car is available on this property, where security includes a roller gate and alarm system.

For more details, or to schedule a viewing, please contact Avesh.

Features

Pets Allowed	Yes		
Interior		Exterior	Sizes
Bedrooms	2	Carports / Parkings	6
Bathrooms	2	Security	Yes
Kitchens	1	Pool	No
Recep. Rooms	2	Views	False
Furnished	No		
			Floor Size
			257m²