



**Tichaona Machinga**  
Candidate Property Practitioner  
Registered with PPRA  
(FFC 120 303 4)  
067 208 2628  
tichaona@dpg.co.za

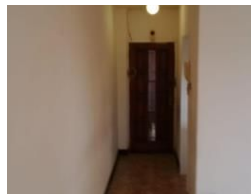
Contact Pietermaritzburg

033 3425129

Shop 6 Mayors Walk Centre, 86 Mayors Walk, Prestbury, Pietermaritzburg, 3208



Web Ref DPR161



**R580,000**

2 1 1

**Monthly Bond Repayment** R5,888.33

Calculated over 20 years at 10.75% with no deposit.

**Transfer Costs** R21,217.00 **Bond Costs** R15,795.00

These calculations are only a guide. Please ask your conveyancer for exact calculations.

**Monthly Levy** R1,650 **Monthly Rates** R1,600 **Sectional Title Levy** R1,650

**Special Levy** R10

### City Century Flat

Beautiful Pietermaritzburg City Central flat up for grabs with owner relocating in a good condition, in the heart of much loved CBD area and of good environment and peace. The flat has a good-looking kitchen and all rooms are tiled with a balcony and a big lounge and big bedrooms. The flat has an end and also two ensuites with both tub and shower separately and another toilet standing alone. It also have a double parking area which is covered and a working lift and also two entrances one is for emergency use.

### Features

#### Interior

Bedrooms	2
Bathrooms	1
Kitchens	1
Recep. Rooms	1
Furnished	No

#### Exterior

Garages	1
Security	No
Pool	No
Views	False

#### Sizes

Floor Size	90m²
Land Size	90m²