



Christo Pretorius
084 029 1382
christopretorius@dpg.co.za

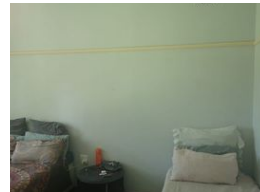
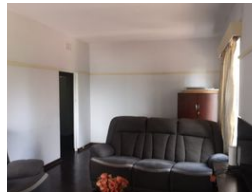
Contact Pietermaritzburg

033 3425129

Shop 6 Mayors Walk Centre, 86 Mayors Walk, Prestbury, Pietermaritzburg, 3208



Web Ref DPR17520



R750,000

2 1

Monthly Bond Repayment R7,487.85

Calculated over 20 years at 10.5% with no deposit.

Transfer Costs R25,877.00 **Bond Costs** R19,565.00

These calculations are only a guide. Please ask your conveyancer for exact calculations.

Charming 2-Bedroom Flatlet – Ideal for Investors or First-Time Buyers*

Discover an exceptional opportunity with this spacious 2-bedroom flatlet, perfectly situated within walking distance of Woodburn and Scottsville Malls. This property features:

- Two Large Bedrooms* with Built-In Cupboards (BIC)
- Open Plan Lounge and Dining Area* for comfortable living
- Fitted Kitchen* equipped for all your culinary needs
- Designated Parking* for convenience

Whether you're an investor seeking a promising asset or a first-time buyer looking to step into the property market, this flatlet offers the ideal blend of location and functionality.

Contact our Listing Agent Today to arrange a viewing and make this property yours!

Features

Interior

Bedrooms	2
Bathrooms	1
Kitchens	1
Recep. Rooms	2
Furnished	No

Exterior

Carports / Parkings	1
Security	No
Pool	No
Views	False

Sizes

Floor Size	96m²
------------	------