

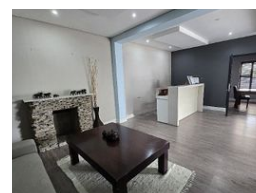
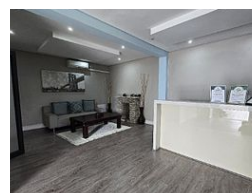


**Brendon Bosch**  
084 819 8847  
brendonbosch@dpg.co.za

Contact Pinetown

031 8229071

39 Glenugie Road  
Pinetown



## R1,650,000

🛏 3 🚿 2

**Monthly Bond Repayment** R16,473.27

Calculated over 20 years at 10.5% with no deposit.

**Transfer Costs** R52,555.00 **Bond Costs** R30,875.00

These calculations are only a guide. Please ask your conveyancer for exact calculations.

**Monthly Rates** R1,380

**GREAT LIVE & WORK FROM HOME PREMISES! OFFICES, DRS ROOMS ETC!**

Set on a busy Rd (Lauth Rd) between Crompton St & Glenugie Rd just off Pinetown CBD. This residential property which has been transformed & used as offices / work premisses for the last few years. Will make great Drs or dentist rooms as well! Fully tiled with fancy bulk heads. From the front you enter a large, covered patio entrance with a secretarial counter. Waiting lounge. Board room. 3 offices rooms. 2 bathrooms & a kitchen. Under cover parking for at least 8 to 10 cars as well as storage at the back & a bachelor flat. All fully walled with auto access.

Hurry, Hurry!

## Features

Interior		Exterior		Sizes	
Bedrooms	3	Carports / Parkings	14	Land Size	1,563m²
Bathrooms	2	Security	Yes		
Kitchens	1	Pool	No		
Recep. Rooms	2	Views	False		
Furnished	No				