



Brendon Bosch
084 819 8847
brendonbosch@dpg.co.za

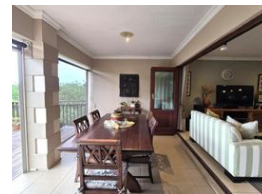
Contact Pinetown

031 8229071

39 Glenugie Road
Pinetown



Web Ref DPR18880



R1,998,000

 3  2  2

Monthly Bond Repayment R20,284.27

Calculated over 20 years at 10.75% with no deposit.

Transfer Costs R75,086.00 **Bond Costs** R32,760.00

These calculations are only a guide. Please ask your conveyancer for exact calculations.

Monthly Levy R2,510.0 **Monthly Rates** R2,600

IMMACULATE (276 SQM) FREE STANDING TOWN HOUSE WITH G-FLAT AT MALACHITE PARK, PADFIELD.

Malachite Park is an upmarket sectional title complex of just 12 spacious town houses. Set on the boarder of Padfield Park and Kloof. For sale is this stunning (276 SQM) split level town house with granny flat. Nice & private with down lights throughout. Boasting 3 large bedrooms (BIC) with the master bed fully air-conditioned. Full family bathroom as well as a lovely shower en-suite. Gorgeous granite fitted kitchen with gas hob, electric oven, breakfast nook & corner pantry. The living room is an open plan concept with combine dining. Wall to wall stack doors open to a large, covered veranda with roll down blinds, then leading onto an open deck patio with views for days! Small manicured garden. Double auto garage + a store room.

THE GRANNY FLAT - Is nice and private. Offers an open plan bedsit, lounge. Bathroom & SEP..

Features

Pets Allowed	Yes				
Interior		Exterior		Sizes	
Bedrooms	3	Garages	2	Floor Size	276m ²
Bathrooms	2	Carports / Parkings	2		
Kitchens	1	Security	No		
Recep. Rooms	1	Pool	No		
Furnished	No	Views	True		